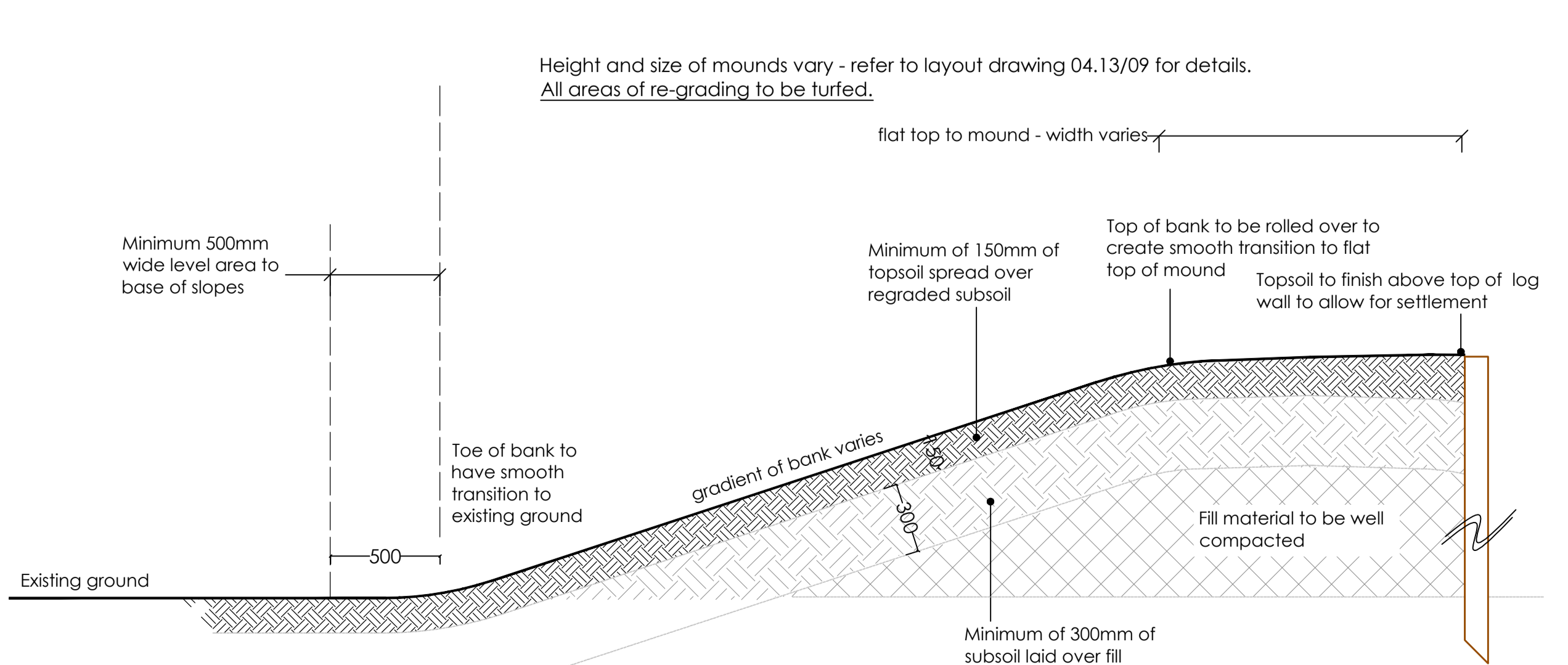
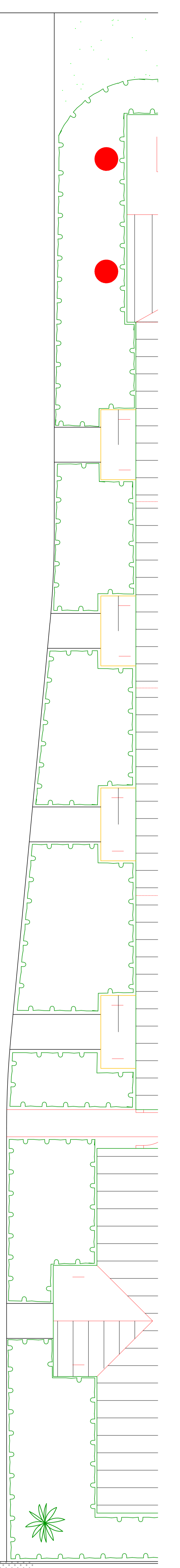


- KEY**
- Mound
 - Tree planting - for all planting information refer to drawing 04.13/04.
 - Playgrade logs, height varies, dia. 100mm
 - Playgrade logs, height varies, dia. 200mm
 - Critical fall area - entire area to be surfaced with grass mat safety surface
 - Technic 'safagrass' grass mat safety surface or equivalent laid over hardwearing turf (to be secured according to manufacturers recommendations)
 - Amenity grass (wear-tolerant grass seed mix)
 - Bulb planting
 - Bin - Broxap Okehampton Redwood Litter bin BX17 4035 (ground fixed) or equivalent
 - Seat - Broxap Hand Made Places 'Buddy seat' BX17 450004 (buddy with moustache, ground fixed) or equivalent
 - Buddy Totems - Check in staff (totem only, buddy and mrs buddy) or equivalent
 - Proposed levels
 - Proposed tarmac path with concrete edging. Surface to be laid with a crown. Edging to be 50x150mm PC concrete pin kerb
 - Hard binding gravel / Breedon gravel surface to control tower base

- DRAWING NOTES:**
- This drawing provides the layout, levels and suggested construction methods for the use of the landscape contractor, it does not constitute a full specification.
 - Appropriate foundation design is the responsibility of the contractor who shall ensure foundations for items on play mounds are not secured in made-up ground.
 - For all standard items of play equipment and street furniture the contractor shall refer to the manufacturers installation guidelines.
 - All elements within the play area (equipment and surfacing) shall meet EN1176 and EN1177.
 - Timber logs shall be suitable for use in play areas: kiln dried, and pressure treated using timber with inherent low split properties to minimise finger traps, logs should have chamfered tops, ie: PlayGuard by M&M Timber or equivalent.
- LIST OF PLAY EQUIPMENT:**
1. Jets : Broxap Hand Made Places Spinning coloured discs, 2no. 'Dizzy Disc' BX/HMP 400007 in 2 different colours - yellow and green or equivalent.
 2. Aeroplane activity 'cockpit' Playpanel 800x600mm (Bespoke)
 3. Passenger seats: Broxap Hand Made Places Block seats BX/HMP 450003 or equivalent.
 4. Check in staff: Broxap Hand Made Places 'Buddy Bus Stop' Totem BX/HMP 450004 (buddy and mrs buddy only - no seat) or equivalent.
 5. Double embankment slide : 1.25m height Kompan PCM110203 or equivalent.
 6. Timber steps to slide : Embankment steps (2no. with handrail) by Playdale or equivalent.
 7. Straight tunnel : Playdale UT/21X or equivalent.
 8. Bespoke jet plane springer : 38x-hole 1.48 or equivalent, to be finished in grey not bright/primary colours.
 9. Seat: Broxap Hand Made Places 'Buddy Bus Stop' seat BX/HMP 450004 (mrs buddy with moustache) or equivalent.
 6. Control tower: 'Counter' play panel Playdale PIP(CO)12 or equivalent.
- TIMBER FEATURES:**
- Timber log retaining walls to form shape of plane, 100mm and 200mm dia - height varies between 0.3m above ground and 1.2m above ground. Refer to specification in drawing notes.
- Control tower to be created with play panel and logs of varying heights as shown on drawing 04.13/10. Base of tower to be surfaced with breedon gravel/hard binding gravel.
- PLAYGROUND MARKINGS:**
- White thermoplastic graphics to be installed on tarmac footpath as indicated to mark the runway.



DETAIL A - TYPICAL SECTION THROUGH MOUND(S) - BANK FORMED WITH FILL AND LAID WITH TOPSOIL FOR TURFING
Scale 1:20



bellinger design
landscape architects

The Garden Office (North) | Tel: 01386 729063
The Estate Yard, Overbury, | Newnham, GL20 7NT | mail@bellingerdesign.co.uk

Project: LEICESTER ROAD, LUTTERWORTH

Title: CONSTRUCTION DETAILS (1 of 2)
DETAILED PLAN

Client: WILLIAM DAVIS LTD

Drawing number: 04.13/09 | Revision: B

Date: FEB '16 | Drawn: HS | Checked: FB | Scale: 1:50