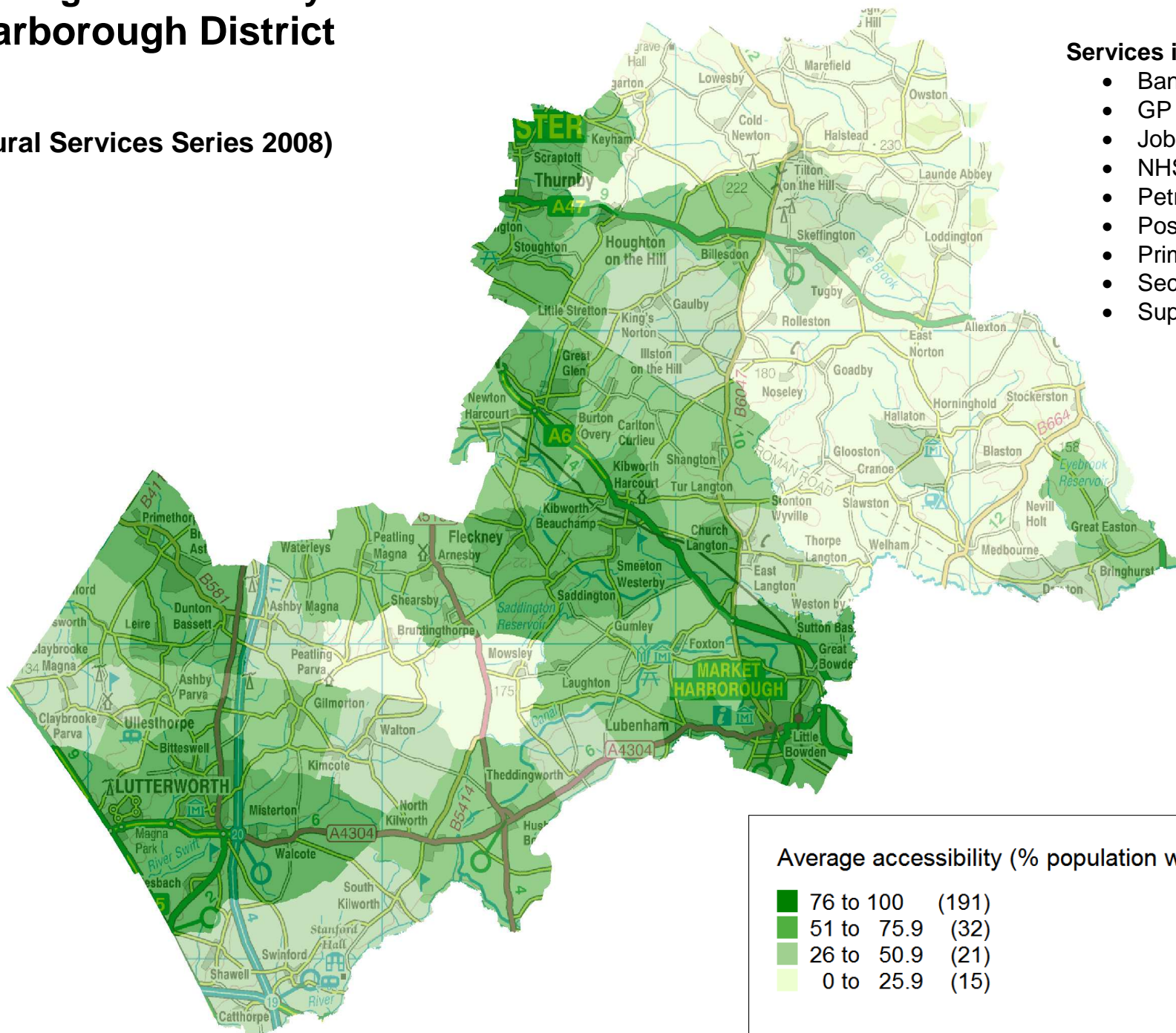


# Average accessibility of services in Harborough District

(Rural Services Series 2008)



## Services include

- Banks and Building Societies (4km)
- GP Surgeries (4km)
- Jobcentres (8km)
- NHS Dentists (4km)
- Petrol stations (4km)
- Post Offices (2km)
- Primary Schools (2km)
- Secondary Schools (2km)
- Supermarkets (2km)

## Average accessibility (% population within specified distance)

76 to 100	(191)
51 to 75.9	(32)
26 to 50.9	(21)
0 to 25.9	(15)