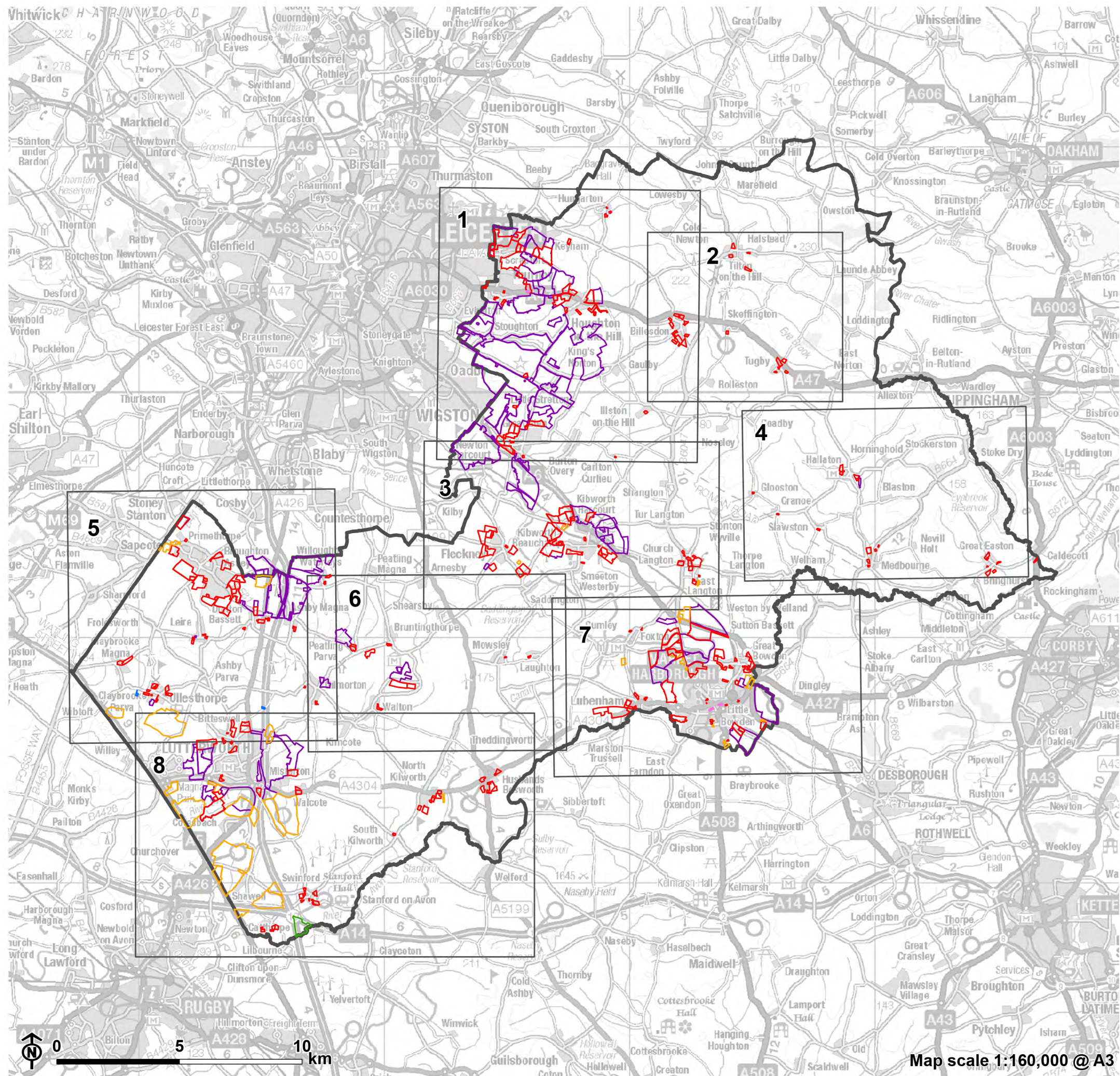


## **Appendix F**

### Location of Site Options





**Figure E.1: Site Options - Grid Overview**

- Harborough District
- Grid extent
- Site category**
  - Housing
  - Mixed use
  - Employment
  - Renewable energy generation
  - Gypsy and Traveller
  - Retail

An interactive map showing the site options is available alongside the Strategic Housing and Economic Land Availability Assessment (SHELAA). This map can be accessed via the following link:

<https://harborough.opus4.co.uk/planning/localplan/maps/shelaa-2021-published-august-2022>



Figure E.9: Site Options  
Grid 1 of 8

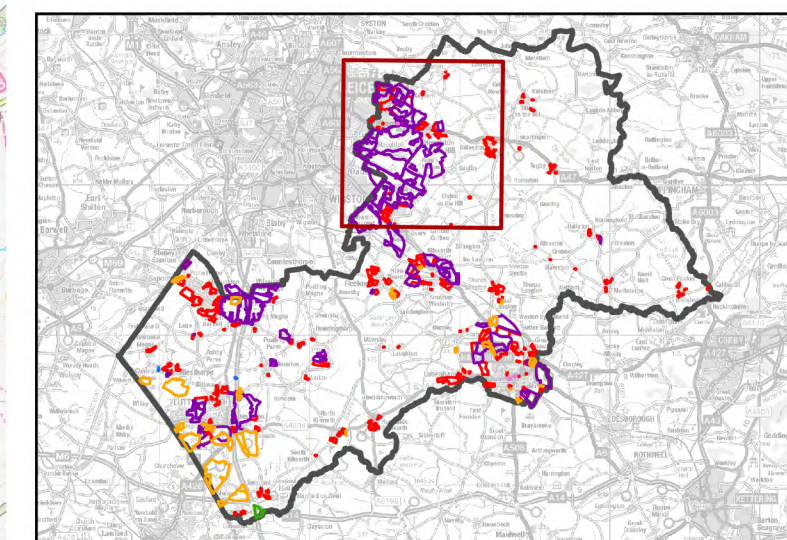
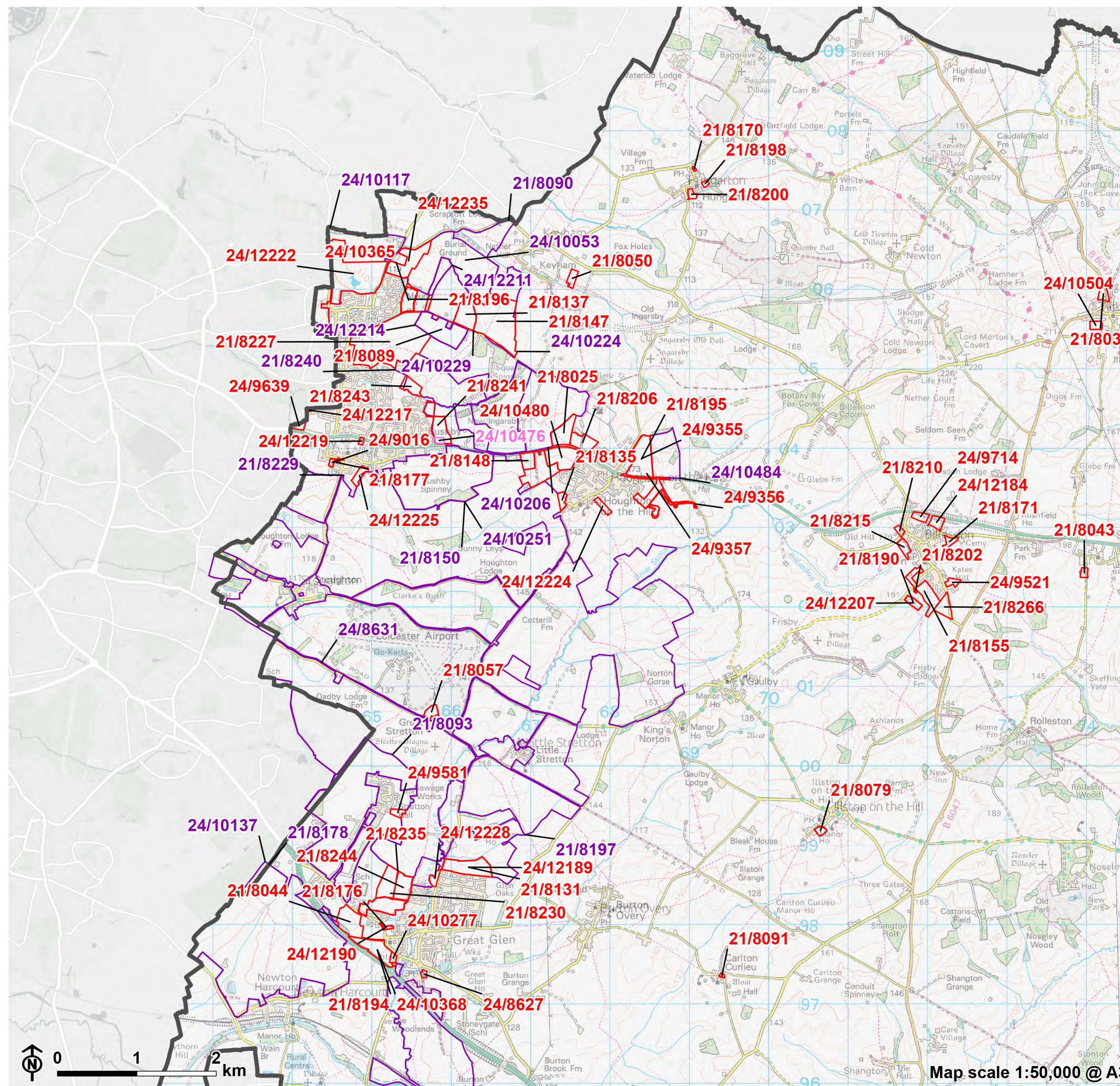
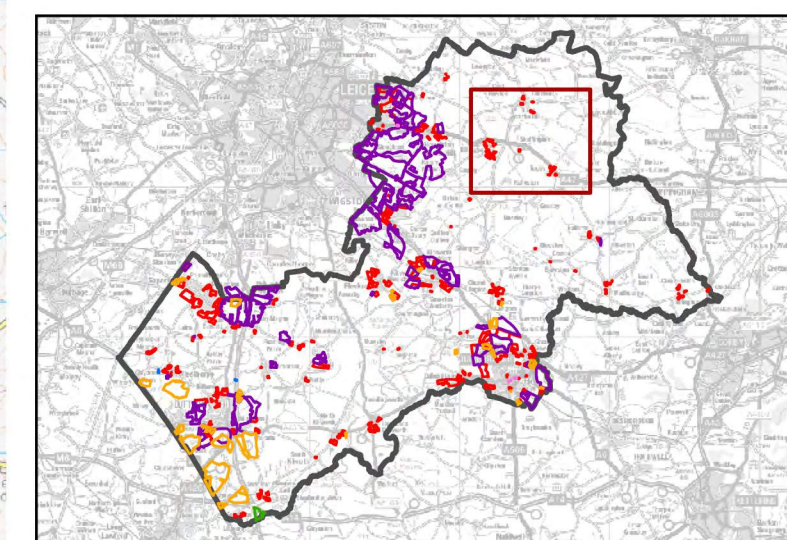
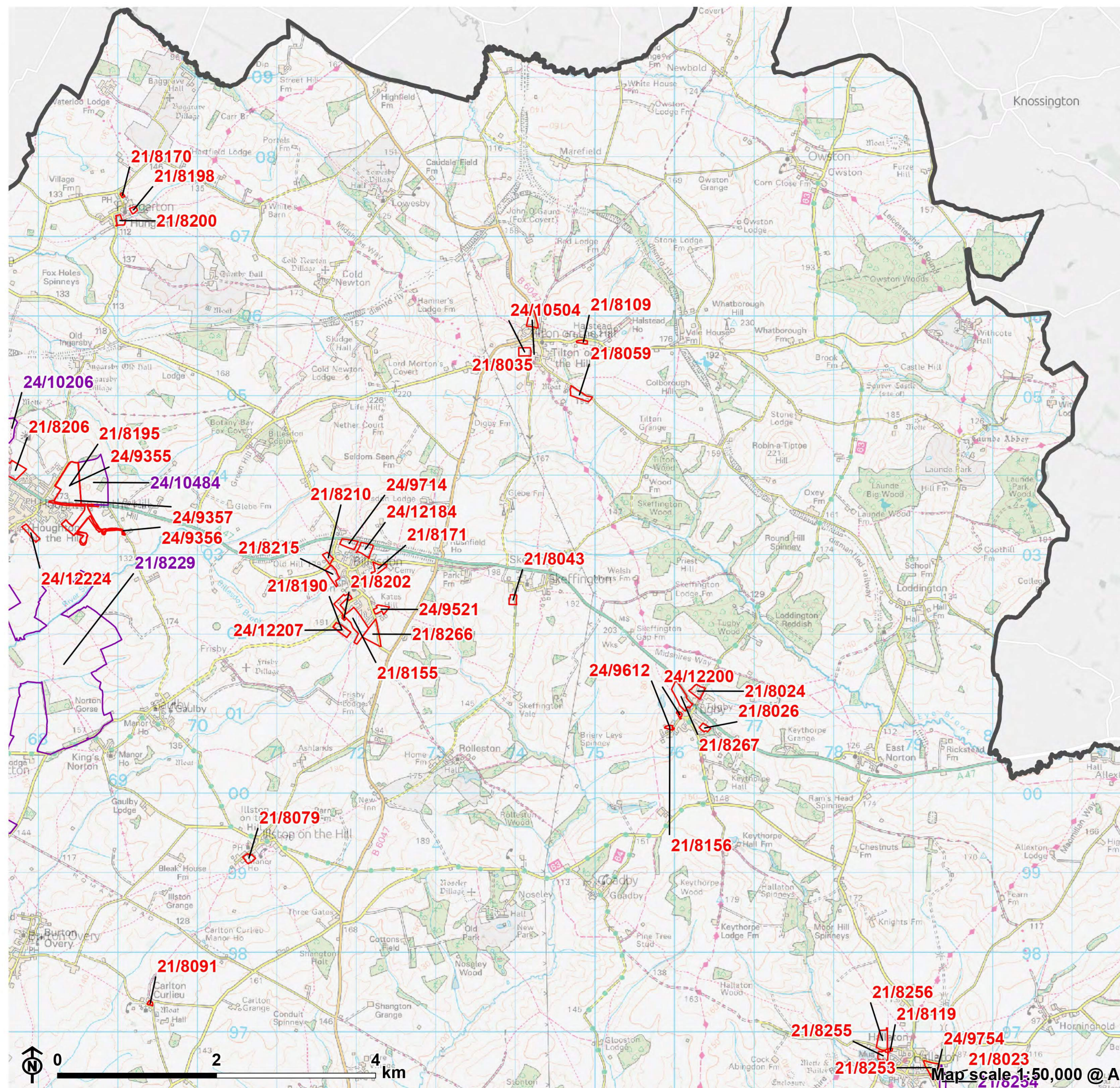





Figure E.9: Site Options  
Grid 2 of 8







 Harborough District

**Site category**

 Housing

 Mixed use

 Employment

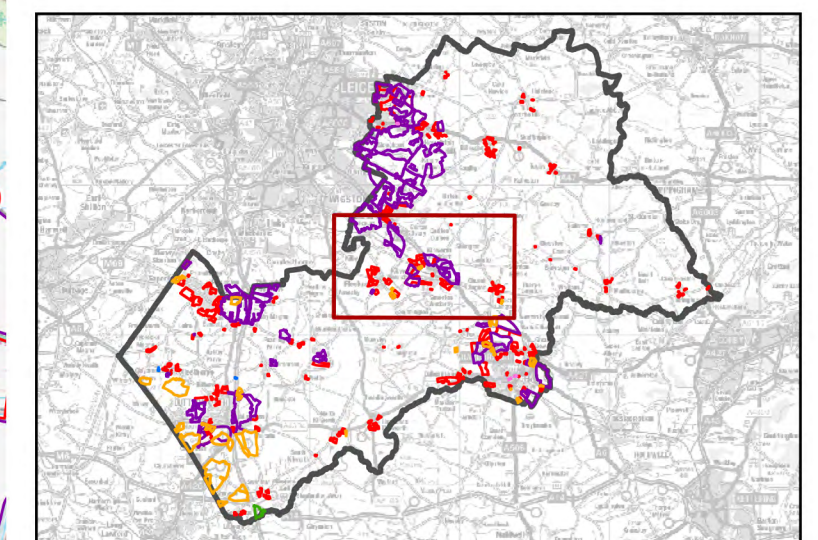




Figure E.9: Site Options  
Grid 4 of 8

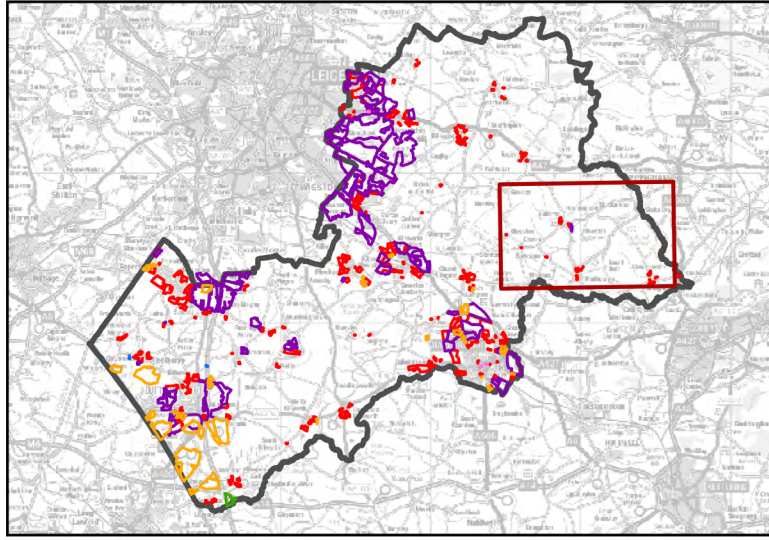
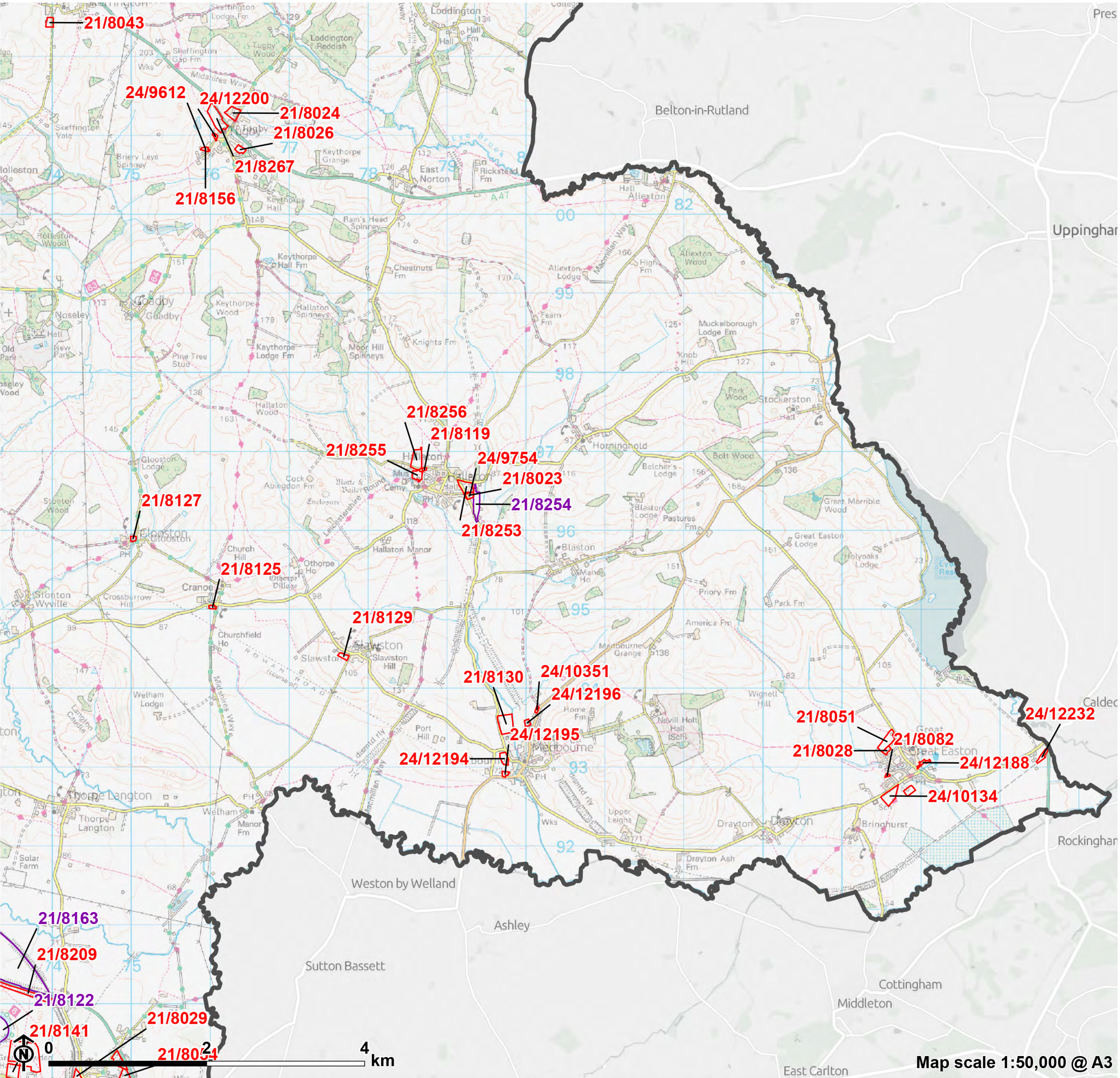
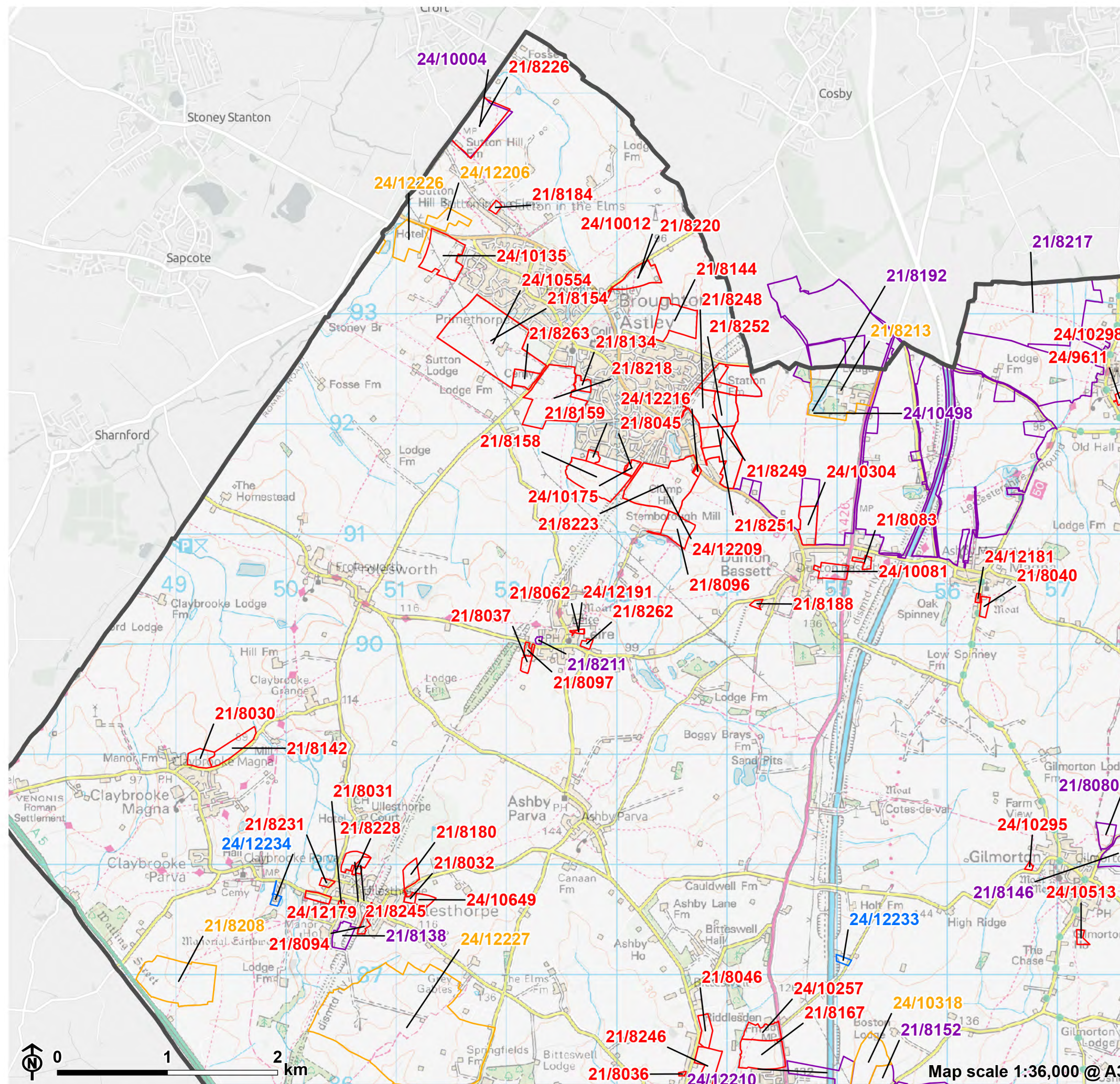




Figure E.9: Site Options  
Grid 5 of 8



- Harborough District
- Site category**
- Housing
  - Mixed use
  - Employment
  - Gypsy and Traveller

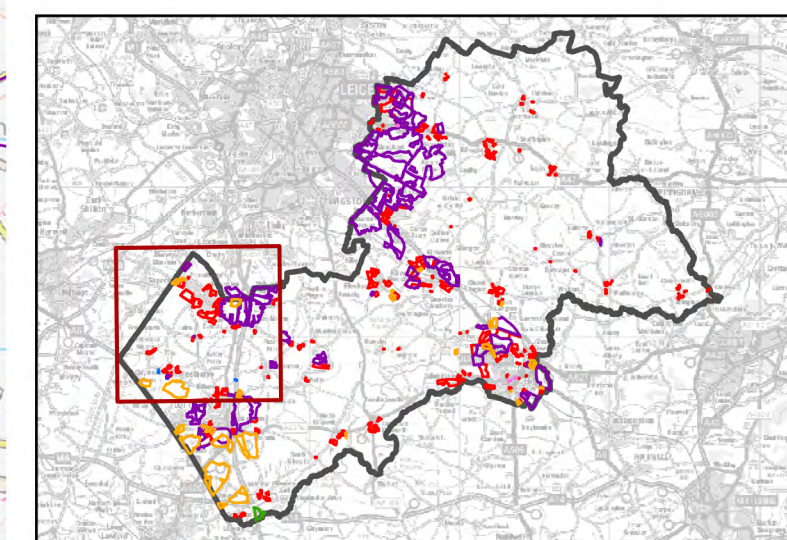
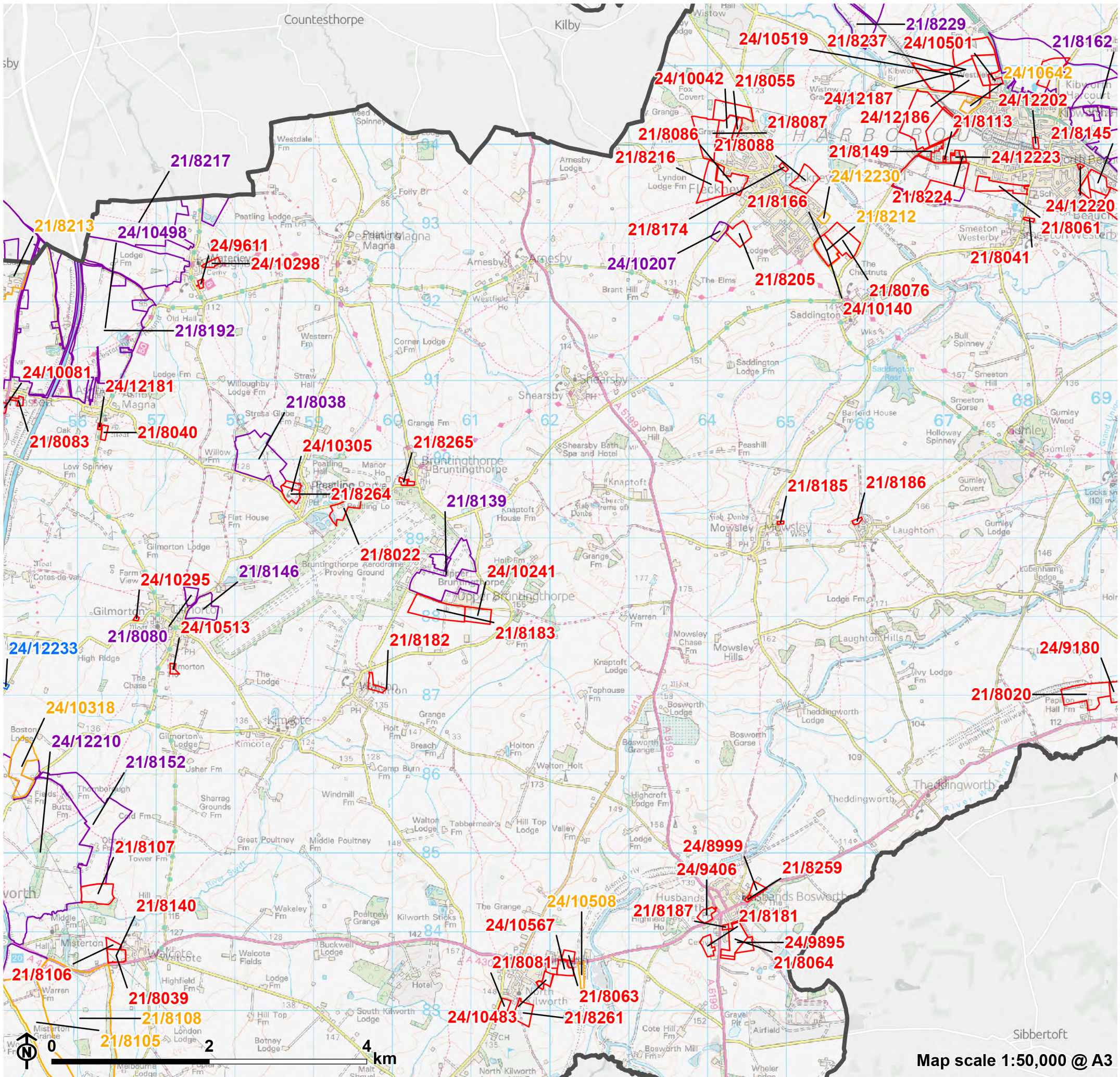




Figure E.9: Site Options  
Grid 6 of 8



- Harborough District
- Site category**
- Housing
  - Mixed use
  - Employment
  - Gypsy and Traveller

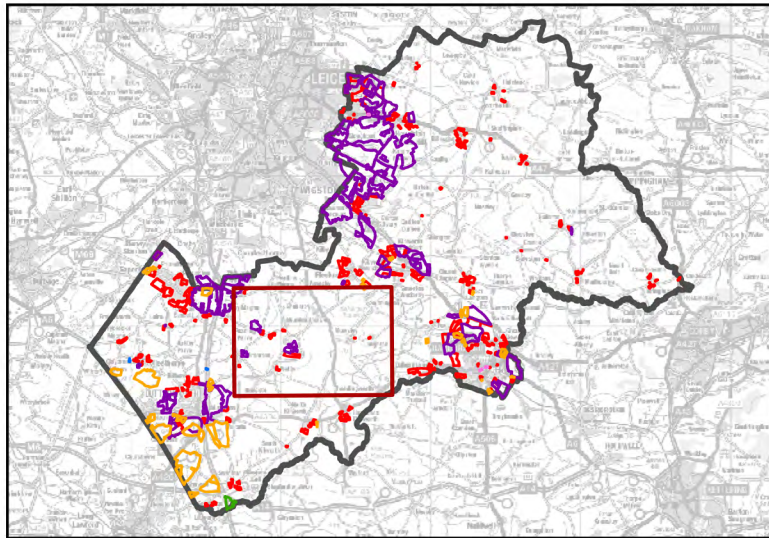




Figure E.9: Site Options  
Grid 7 of 8

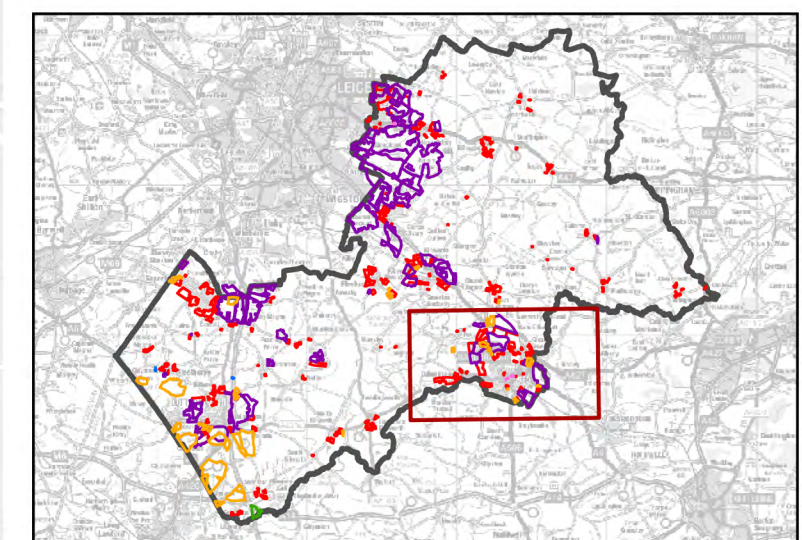
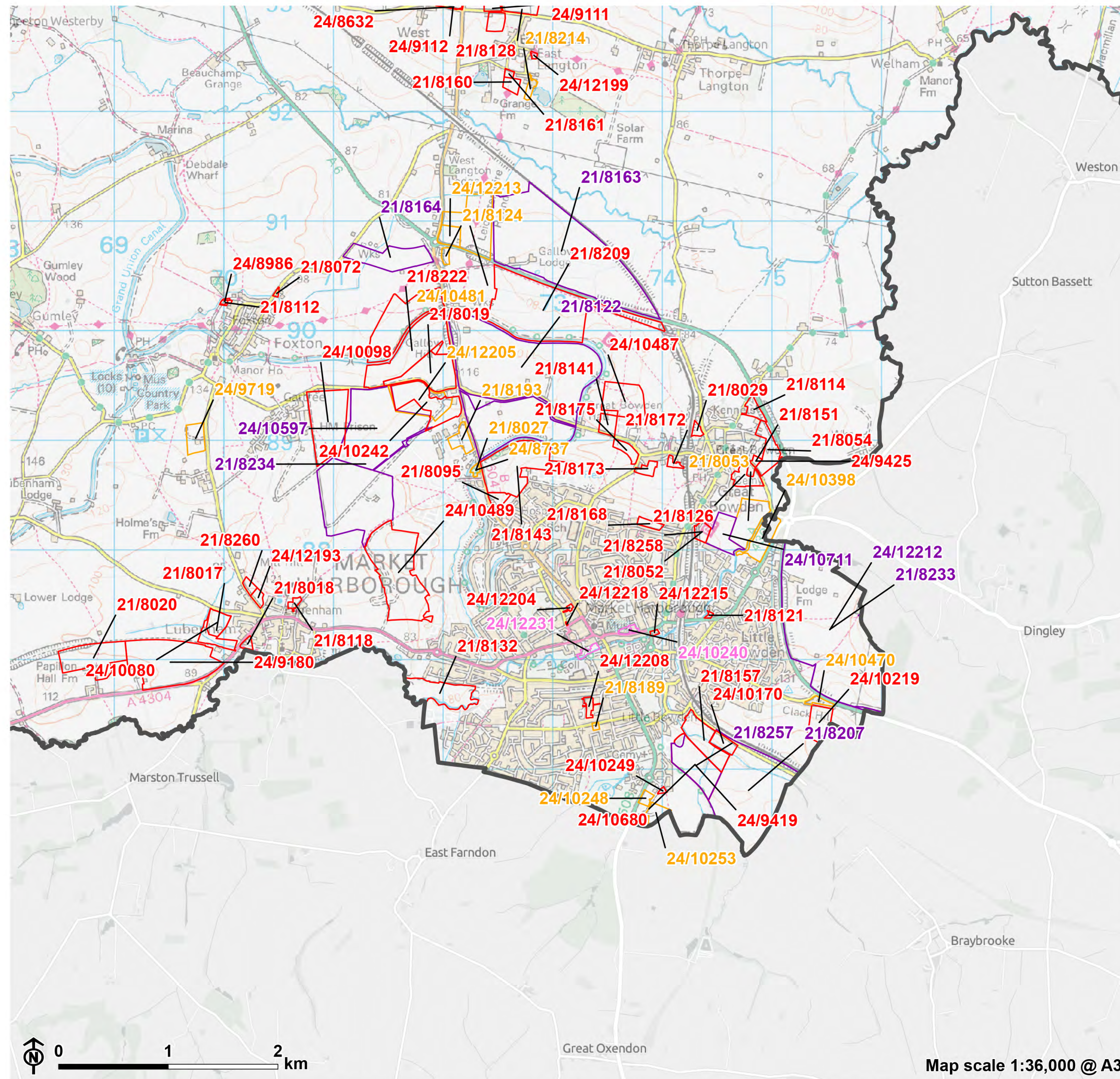




Figure E.9: Site Options  
Grid 8 of 8

