

## **EAST MIDLANDS REGIONAL ASSEMBLY - WORKING ARRANGEMENTS**

### **Introduction**

The Assembly's Organisational Review resulted in substantial changes to the previous forums and groups that supported the Assembly's work.

Attached is a diagram which summarises the new working arrangements. This note provides some brief introductory comments to explain the background and diagram.

### **Background**

In April 2003 the Regional Assembly became the Regional Planning Body and took over this role from the East Midlands Regional Local Government Association's Planning Forum. The Planning Forum had a well developed set of advisory groups on spatial matters. However, the Regional Assembly also had a number of similar groups dealing with non spatial aspects of the same work areas. For example, the Assembly had its own Environment Task Group whilst the Regional LGA had an Environment Committee. The Assembly's Environment Task Group was supported by an advisory group comprised of representative of the various environmental agencies and partner organisations. However, the Regional LGA's Environment Committee was also supported by an environment officers' group which had many of the same partners involved. There was clearly a need to review and rationalise the number of advisory groups in parallel with the review of the Assembly's own formal groups.

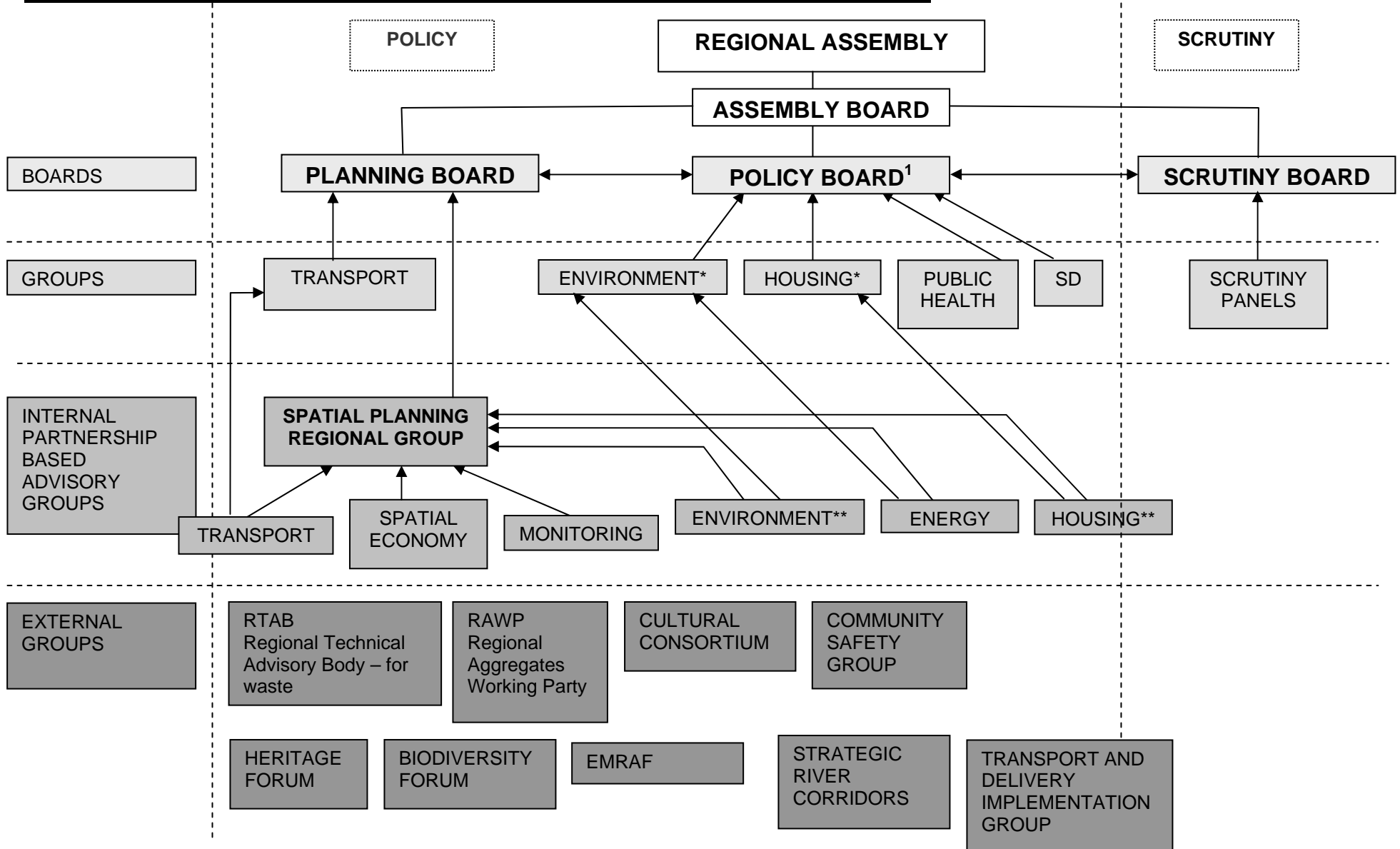
### **New Structures**

The attached diagram shows the new Assembly Board and Group structures. Each Assembly Group reports into and via an Assembly Board. It is not intended, for example, that the Environment Group would make comments on spatial issues direct to the Planning Board. These will be made through and co-ordinated by the Regional Policy Board.

The attached diagram shows the partnership based advisory groups. Some of these advise on spatial matters to the Planning Board, but to avoid duplication, they also advise on general policy development and action planning. This means, for example, that a single environment advisory group advises on both the environmental policies in the spatial strategy and on the more broadly based Regional Environment Strategy and Action Plans. Similarly, a single partnership based housing group provides advice on spatial matters and on the more comprehensive regional housing strategy.

The diagram also recognises that there are a number of "external groups" which have expressed a desire to advise the Assembly on specialist matters or have been set up by statute to advise the Regional Planning Body. The Assembly is developing an understanding with each of these about reporting lines and the way in which they may be asked to support the scrutiny functions of the Assembly. Memoranda of understanding have been developed to explain some of these relationships e.g. with Culture East Midlands, and with the Non-Departmental Public Bodies.

# CURRENT ASSEMBLY WORKING ARRANGEMENTS (NOVEMBER 2004)



Notes: 1) The Policy Board has the remit for Social Inclusion, European perspectives and Life Long Learning which were previously separate groups.

\* Assembly Groups that advise on overall strategy/policy development and input to Spatial

\*\*Advisory Groups that advise on overall strategy/policy development and input to Spatial Strategy.