

# ID2019 Dashboard FINAL

# ID2019 - Map the Data

Hover over icon for more information



## Local Authority

Harborough

## Measure

National Rank

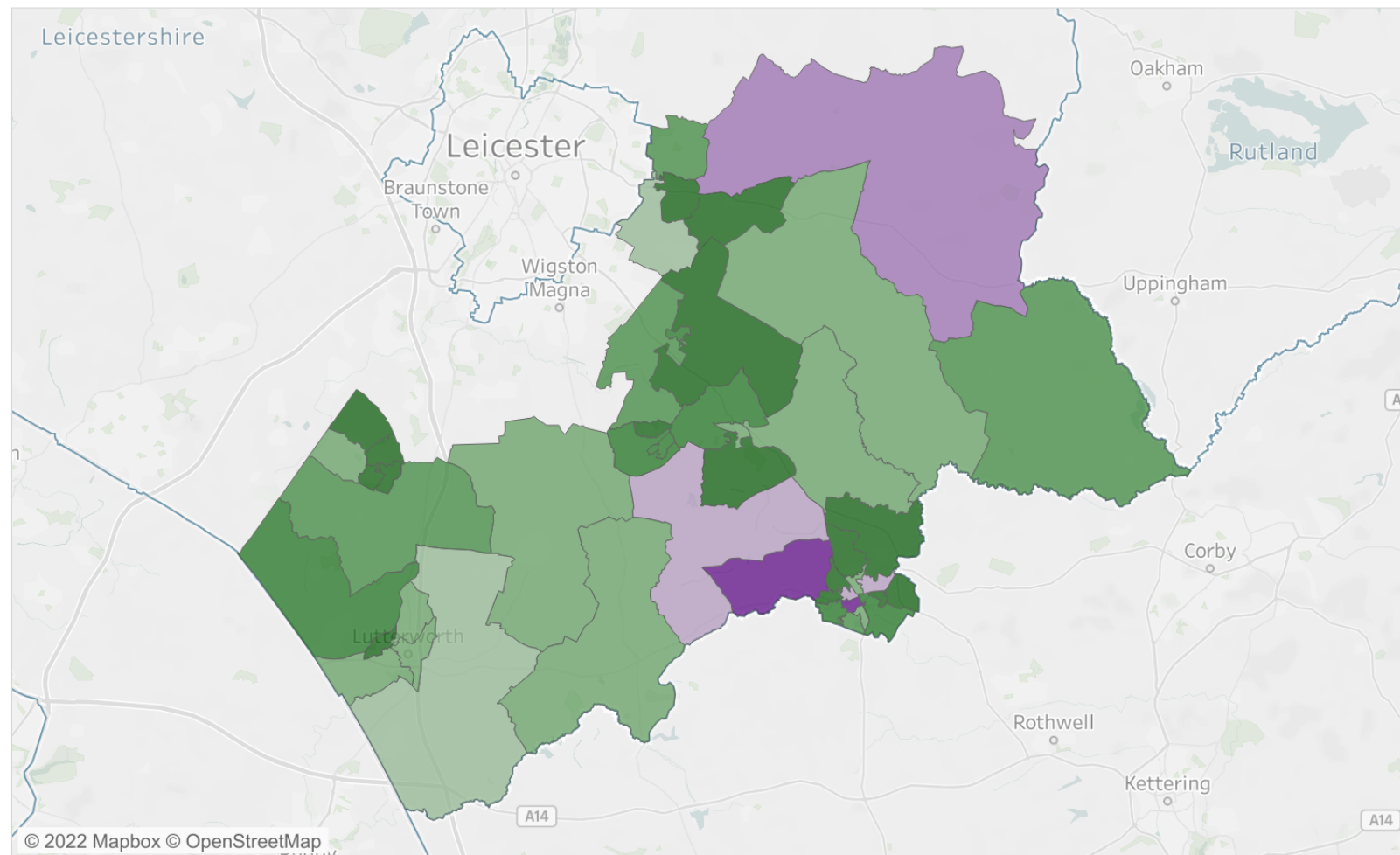
## Highlight LSOA

No items highlighted

## Domain/ Sub-domain

- IMD
- Income
  - Children Sub-domain
  - Older People Sub-domain
- Employment
- Health Deprivation & Disability
- Education, Skills & Training
  - Children & Young People Sub-domain
  - Adult Skills Sub-domain
- Crime
- Barriers to Housing & Services
  - Geographical Barriers Sub-domain
  - Wider Barriers Sub-domain
- Living Environment
  - Indoors Sub-domain
  - Outdoors Sub-domain
- Null

9,690.00 32,774.00



Source: Ministry of Housing, Communities & Local Government, 2019. Produced by the Business Intelligence Service, Leicestershire County Council, 2019.

# ID2019 - Map the Data

Hover over icon for more information



## Local Authority

Harborough

## Measure

National Rank

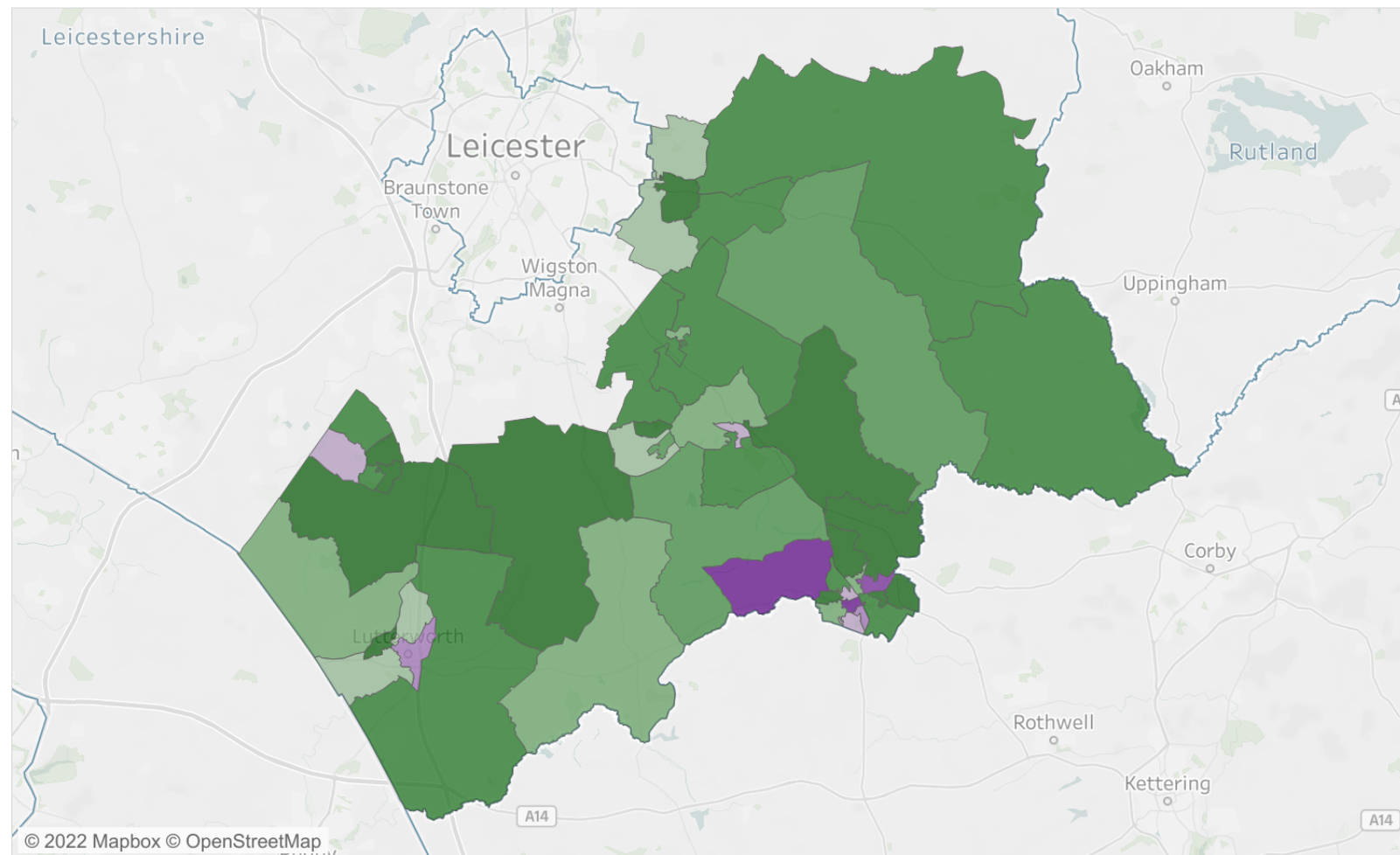
## Highlight LSOA

No items highlighted

## Domain/ Sub-domain

- ☐ IMD
- ☒ Income
  - Children Sub-domain
  - Older People Sub-domain
- ☐ Employment
- ☐ Health Deprivation & Disability
- ☐ Education, Skills & Training
  - Children & Young People Sub-domain
  - Adult Skills Sub-domain
- ☐ Crime
- ☐ Barriers to Housing & Services
  - Geographical Barriers Sub-domain
  - Wider Barriers Sub-domain
- ☐ Living Environment
  - Indoors Sub-domain
  - Outdoors Sub-domain
- ☐ Null

7,857.00  32,479.00



Source: Ministry of Housing, Communities & Local Government, 2019. Produced by the Business Intelligence Service, Leicestershire County Council, 2019.

# ID2019 - Map the Data

Hover over icon for more information



## Local Authority

Harborough

## Measure

National Rank

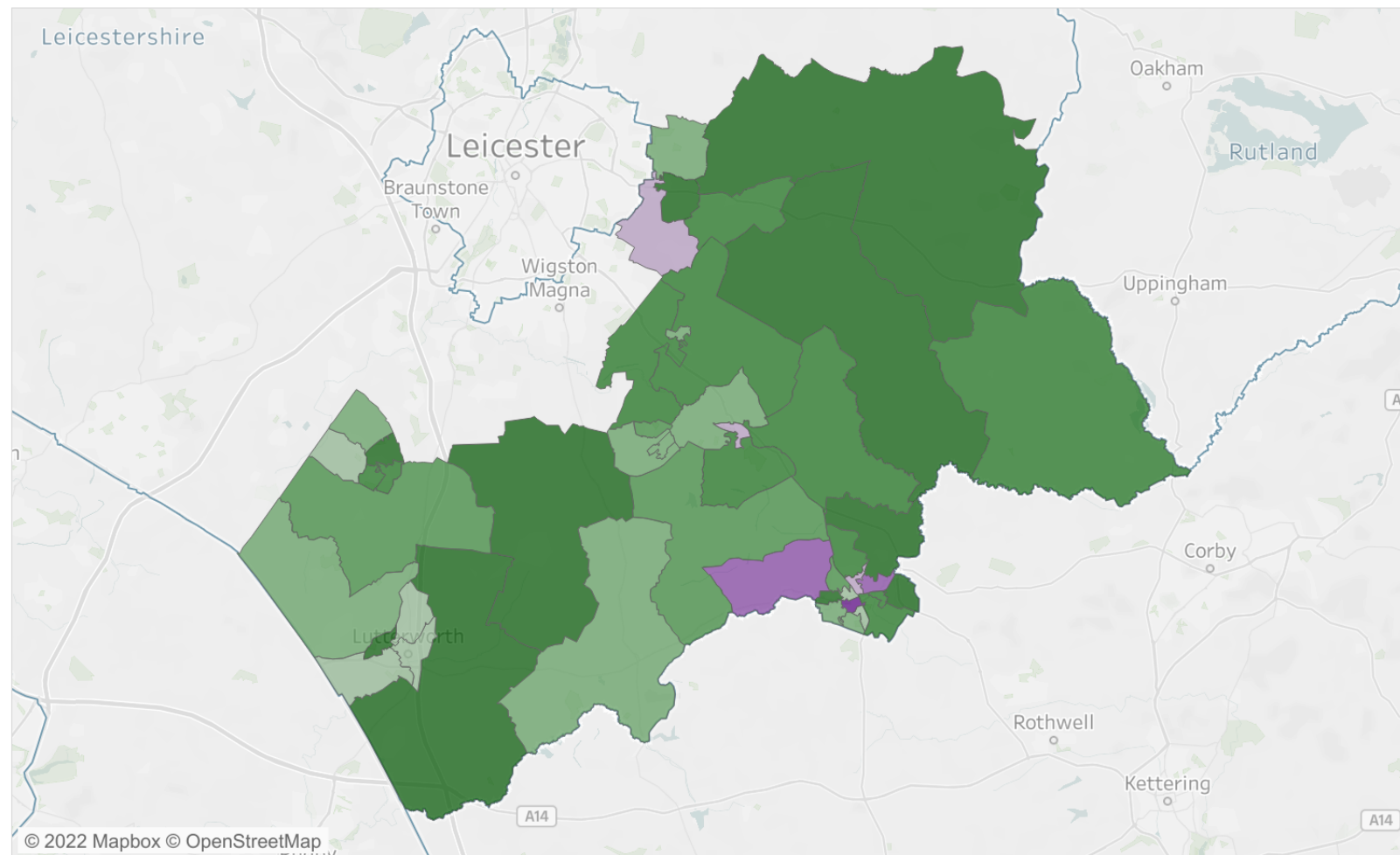
## Highlight LSOA

No items highlighted

## Domain/ Sub-domain

- ☐ IMD
- ☐ Income
  - Children Sub-domain
  - Older People Sub-domain
- ☒ Employment
- ☐ Health Deprivation & Disability
- ☐ Education, Skills & Training
  - Children & Young People Sub-domain
  - Adult Skills Sub-domain
- ☐ Crime
- ☐ Barriers to Housing & Services
  - Geographical Barriers Sub-domain
  - Wider Barriers Sub-domain
- ☐ Living Environment
  - Indoors Sub-domain
  - Outdoors Sub-domain
- ☐ Null

7,720.00  32,576.00



Source: Ministry of Housing, Communities & Local Government, 2019. Produced by the Business Intelligence Service, Leicestershire County Council, 2019.

# ID2019 - Map the Data

Hover over icon for more information



## Local Authority

Harborough

## Measure

National Rank

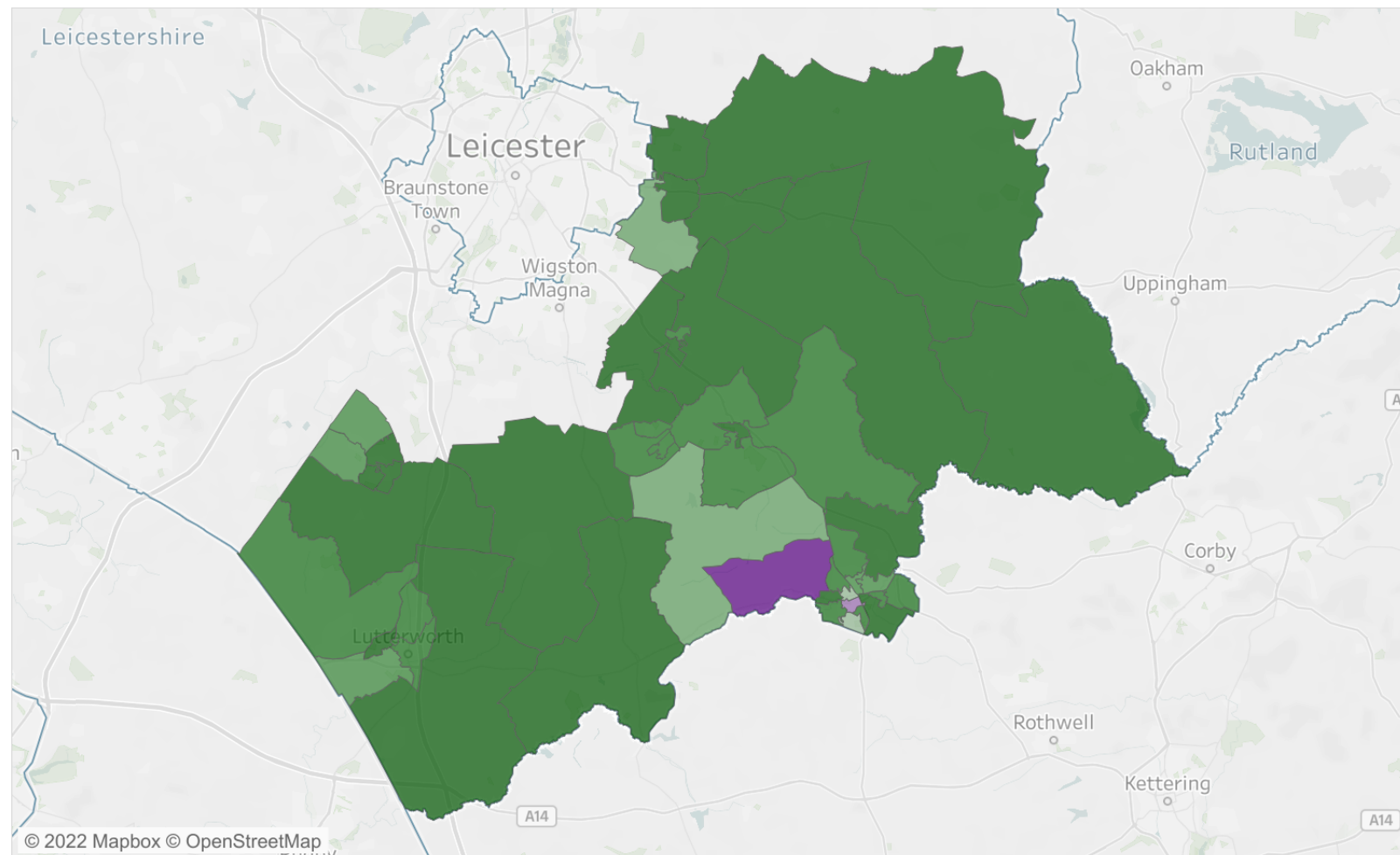
## Highlight LSOA

No items highlighted

## Domain/ Sub-domain

- ☐ IMD
- ☐ Income
  - Children Sub-domain
  - Older People Sub-domain
- ☐ Employment
- ☒ Health Deprivation & Disability
- ☐ Education, Skills & Training
  - Children & Young People Sub-domain
  - Adult Skills Sub-domain
- ☐ Crime
- ☐ Barriers to Housing & Services
  - Geographical Barriers Sub-domain
  - Wider Barriers Sub-domain
- ☐ Living Environment
  - Indoors Sub-domain
  - Outdoors Sub-domain
- ☐ Null

7,491.00  32,482.00



Source: Ministry of Housing, Communities & Local Government, 2019. Produced by the Business Intelligence Service, Leicestershire County Council, 2019.

# ID2019 - Map the Data

Hover over icon for more information



## Local Authority

Harborough

## Measure

National Rank

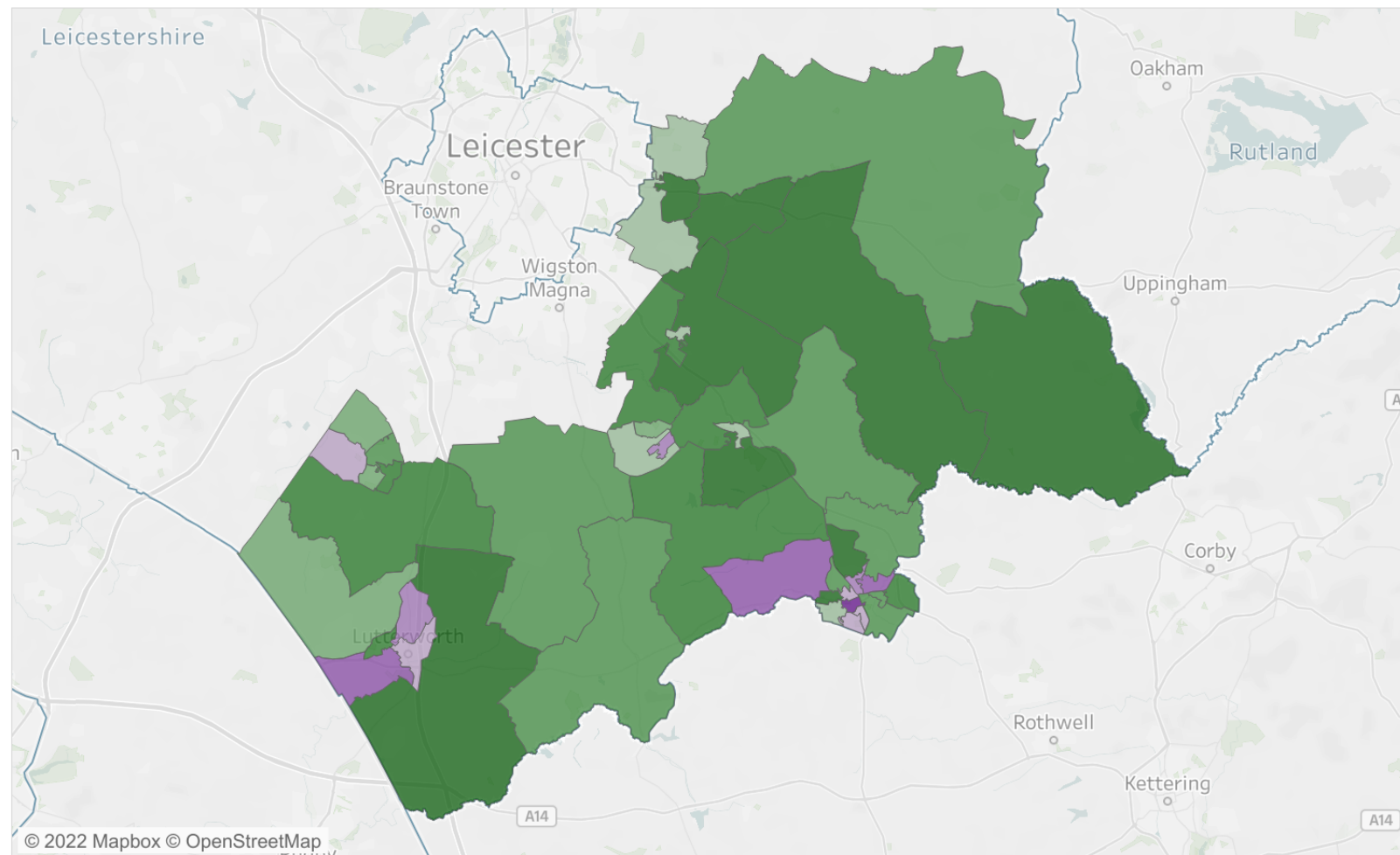
## Highlight LSOA

No items highlighted

## Domain/ Sub-domain

- ☐ IMD
- ☐ Income
  - Children Sub-domain
  - Older People Sub-domain
- ☐ Employment
- ☐ Health Deprivation & Disability
- ☒ Education, Skills & Training
  - Children & Young People Sub-domain
  - Adult Skills Sub-domain
- ☐ Crime
- ☐ Barriers to Housing & Services
  - Geographical Barriers Sub-domain
  - Wider Barriers Sub-domain
- ☐ Living Environment
  - Indoors Sub-domain
  - Outdoors Sub-domain
- ☐ Null

4,186.00  30,768.00



Source: Ministry of Housing, Communities & Local Government, 2019. Produced by the Business Intelligence Service, Leicestershire County Council, 2019.



# ID2019 - Map the Data

Hover over icon for more information



## Local Authority

Harborough

## Measure

National Rank

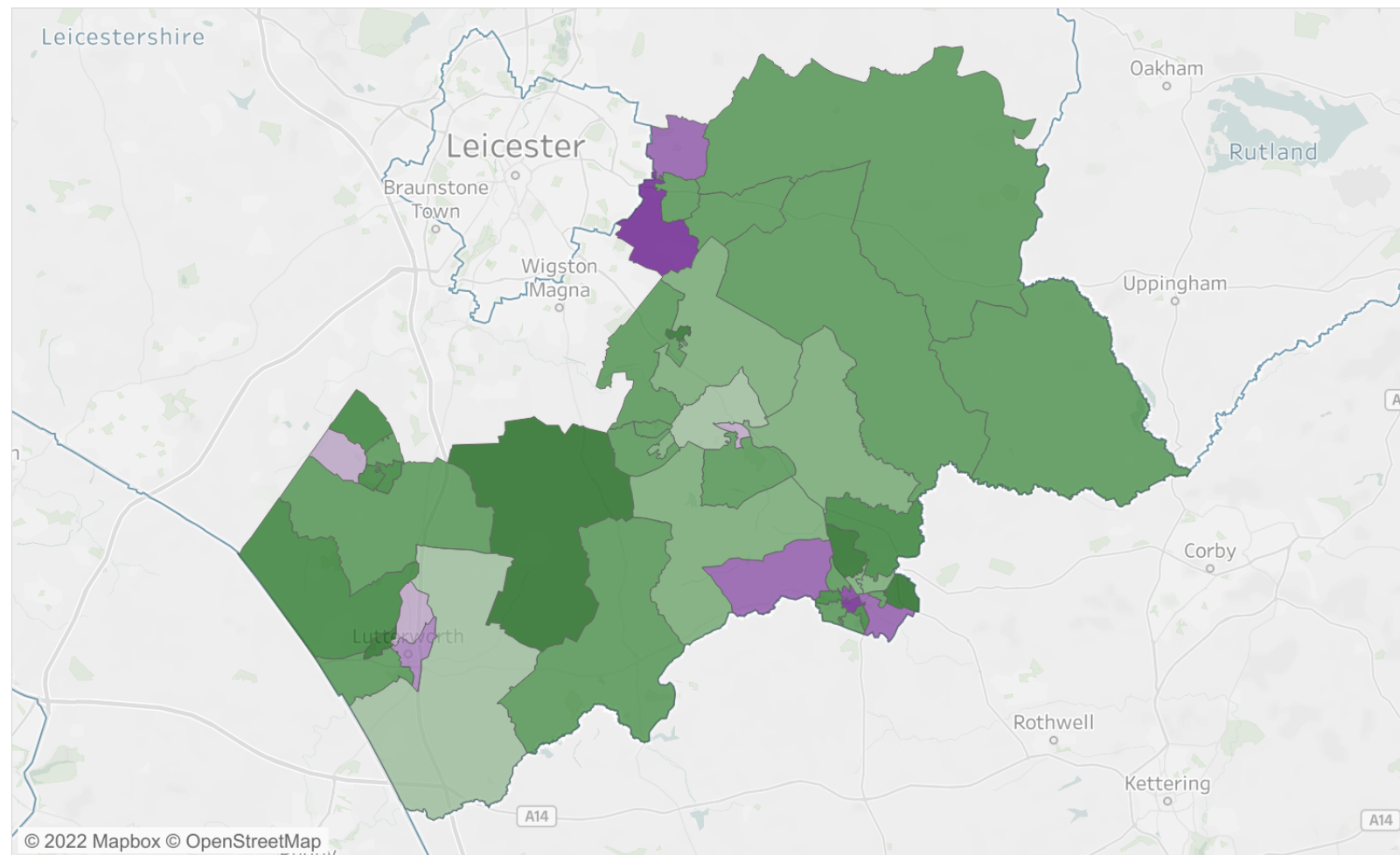
## Highlight LSOA

No items highlighted

## Domain/ Sub-domain

- ☐ IMD
- ☐ Income
  - Children Sub-domain
  - Older People Sub-domain
- ☐ Employment
- ☐ Health Deprivation & Disability
- ☐ Education, Skills & Training
  - Children & Young People Sub-domain
  - Adult Skills Sub-domain
- ☒ Crime
- ☐ Barriers to Housing & Services
  - Geographical Barriers Sub-domain
  - Wider Barriers Sub-domain
- ☐ Living Environment
  - Indoors Sub-domain
  - Outdoors Sub-domain
- ☐ Null

8,407.00  32,606.00



Source: Ministry of Housing, Communities & Local Government, 2019. Produced by the Business Intelligence Service, Leicestershire County Council, 2019.

# ID2019 - Map the Data

Hover over icon for more information



## Local Authority

Harborough

## Measure

National Rank

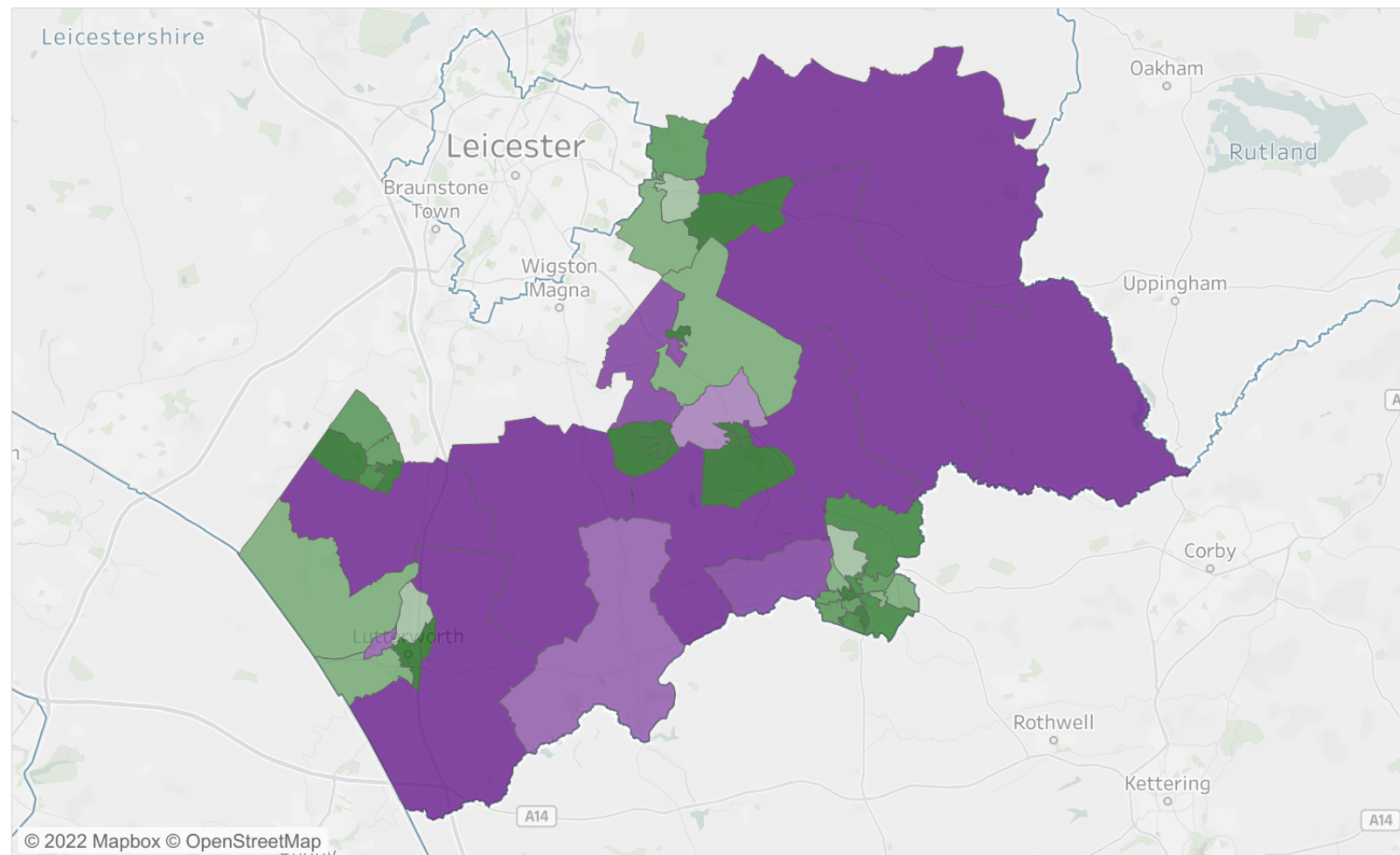
## Highlight LSOA

No items highlighted

## Domain/ Sub-domain

- ☐ IMD
- ☐ Income
  - Children Sub-domain
  - Older People Sub-domain
- ☐ Employment
- ☐ Health Deprivation & Disability
- ☐ Education, Skills & Training
  - Children & Young People Sub-domain
  - Adult Skills Sub-domain
- ☐ Crime
- ☒ Barriers to Housing & Services
  - Geographical Barriers Sub-domain
  - Wider Barriers Sub-domain
- ☐ Living Environment
  - Indoors Sub-domain
  - Outdoors Sub-domain
- ☐ Null

658.00  32,393.00



Source: Ministry of Housing, Communities & Local Government, 2019. Produced by the Business Intelligence Service, Leicestershire County Council, 2019.



# ID2019 - Map the Data

Hover over icon for more information



## Local Authority

Harborough

## Measure

National Rank

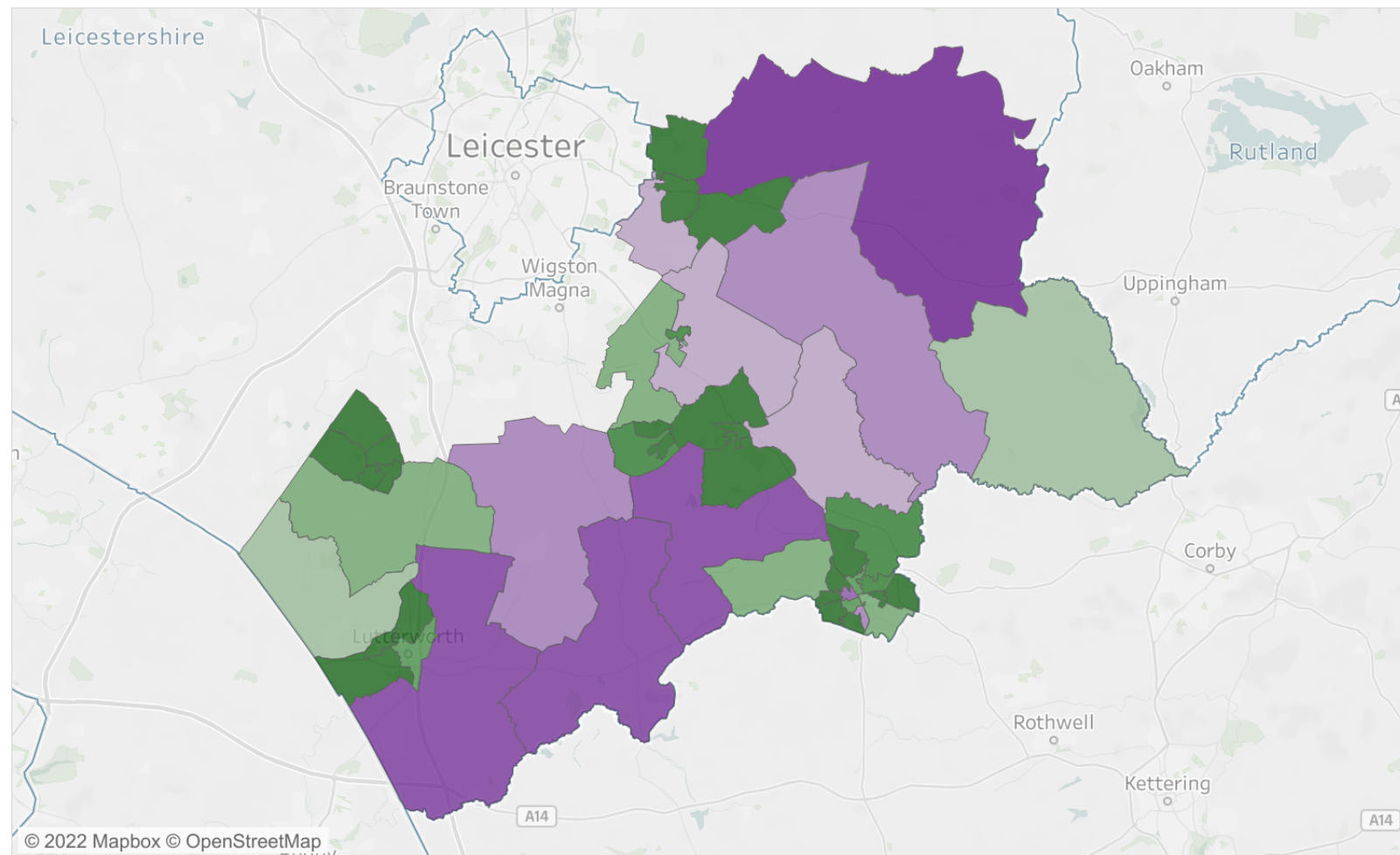
## Highlight LSOA

No items highlighted

## Domain/ Sub-domain

- ☐ IMD
- ☐ Income
  - Children Sub-domain
  - Older People Sub-domain
- ☐ Employment
- ☐ Health Deprivation & Disability
- ☐ Education, Skills & Training
  - Children & Young People Sub-domain
  - Adult Skills Sub-domain
- ☐ Crime
- ☐ Barriers to Housing & Services
  - Geographical Barriers Sub-domain
  - Wider Barriers Sub-domain
- ☒ Living Environment
  - Indoors Sub-domain
  - Outdoors Sub-domain
- ☐ Null

1,562.00  32,811.00



Source: Ministry of Housing, Communities & Local Government, 2019. Produced by the Business Intelligence Service, Leicestershire County Council, 2019.