

## CSP HIGHLIGHT REPORT

### Brief Description of Priority

#### Reduce Acquisitive Crime

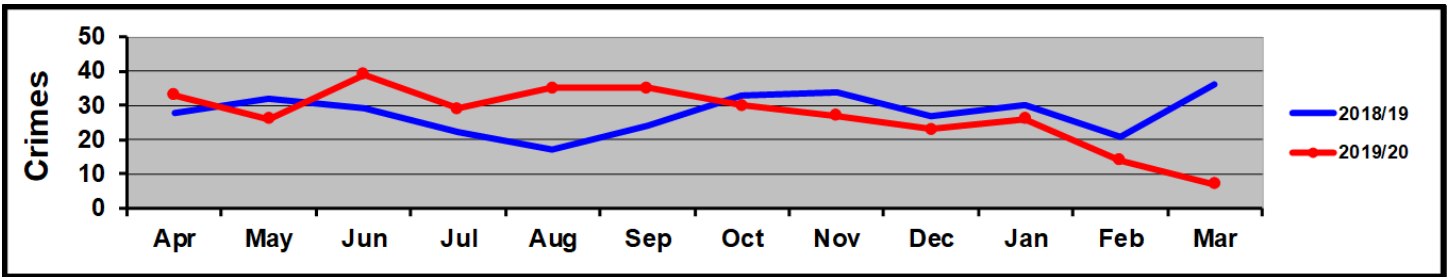
- Work to reduce domestic burglary within the district
- Work to reduce theft from motor vehicles
- Work to reduce retail crime
- Raise awareness of Rural Acquisitive Crime and prevention

Period Covered From/To: 1<sup>st</sup> October – 31<sup>st</sup> March 2020

Current Status:     **Red**          **Amber**          **Green**    

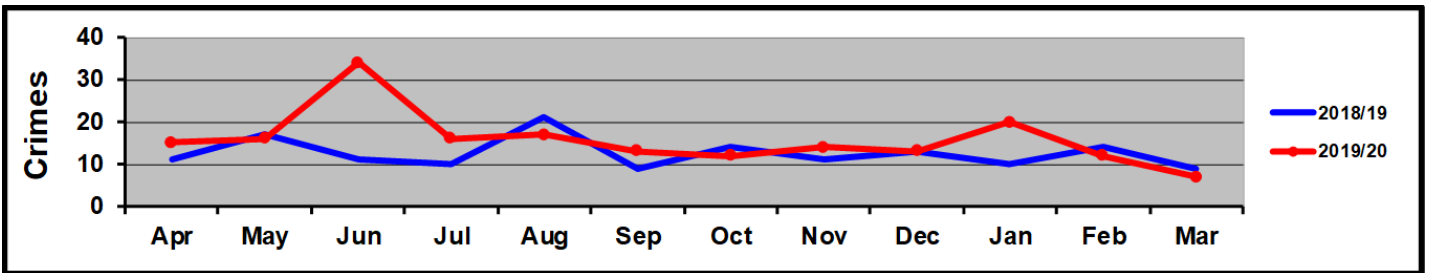
Number of residential burglaries YTD compared to last year (Police)

Crimes YTD	
2018/19	2019/20
<b>334</b>	<b>324</b>



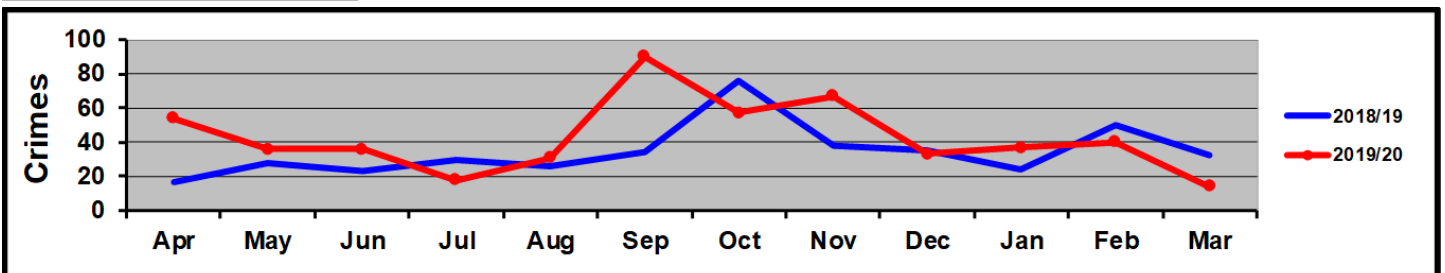
Number of Business and community Burglaries

Crimes YTD	
2018/19	2019/20
<b>150</b>	<b>189</b>



Number of Theft from motor vehicles YTD

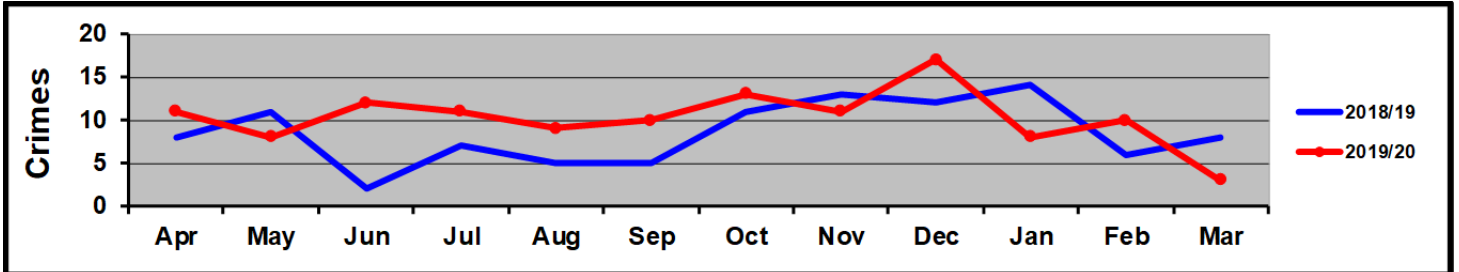
Crimes YTD	
2018/19	2019/20
<b>415</b>	<b>513</b>



## CSP HIGHLIGHT REPORT

### Theft of Motor Vehicles

Crimes YTD	
2018/19	2019/20
104	123



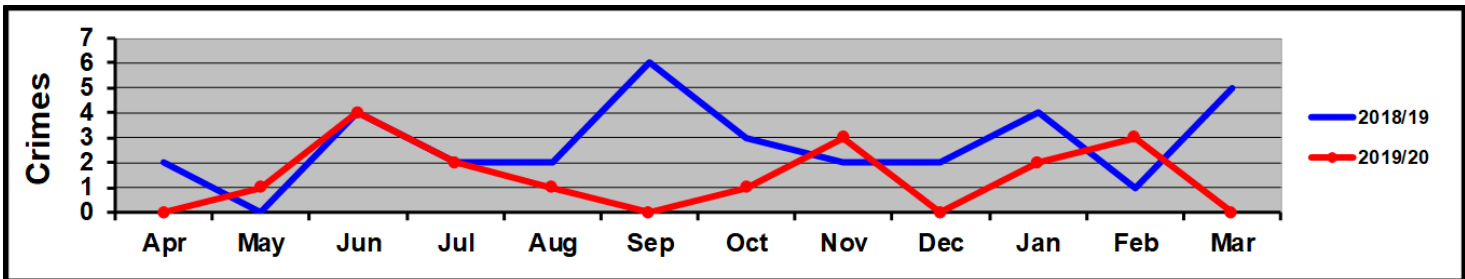
### Shoplifting YTD

**2018/19: 512**

**2019/20: 351**

### Robbery

Crimes YTD	
2018/19	2019/20
33	17



### Position statement

From October to March the Neighbourhood Policing Area (NPA) undertook significant changes. The NPA area of Eastern Counties ceased in March. We are now Harborough and Wigston NPA. Melton and Rutland has now formed another NPA.

The Harborough and Wigston NPA now covers two sites (Harborough and Wigston) and has a 24 hrs response at each site and now an investigation team with a Detective Inspector. This is a huge change in the way we work and it is expected that with this new model there will be improvements in our service to the area.

Our peaks in crime have been theft from work vans. There has been a Leicestershire police media campaign which has been widely publicised in the community.

Officers have worked with our local media platforms ie HFM, our social media and again with a local business to mark tools for traders.

## CSP HIGHLIGHT REPORT

We have used various tactics to target the offenders using by overt and covert patrolling, targeted patrolling of high risk areas.

Theft of motor vehicles- especially high end vehicles - with keyless entry spiked for a short time. Again there was another crime prevention campaign to advise drivers vehicles that had keyless entry.

The advice given was to purchase such items as Faraday pouches, steering wheel locks as well as keeping keys out of range when in the house. There have been arrests made in the force area and by colleagues in neighbouring forces.

February and March saw Corona Virus take hold of Europe and the UK. On March 23<sup>rd</sup> the country was placed under lock down. This saw a decline in 'normal' crime types occurring ie burglary. But the Police service was now given new powers to police those breaking Corona virus laws set by the government. This has led to a change in our crime patterns and types of crime.

### Reduce domestic burglary

Action	Summary
Awareness campaigns:  Residential burglary campaign over the Christmas period - 'Darker nights'	Widely publicised campaign to encourage people to think of security over the Christmas period.  Proactive team targeted those who are known to cause us harm and ensure burglary offences were investigated expeditiously, ensuring early arrests.

### Reduce Theft From Motor Vehicles

Action	Summary
Awareness campaigns -  'Lock It or Lose it'  Tool marking  Distribution of alarms for victims	There was a high profile campaign targeting residents in Lutterworth and Harborough to encourage residents and trades people to lock their vans, empty vans, park in lit areas etc.  We handed out a numbers of alarms and worked in partnership with a local company to mark tools for free.  There were a number of trades people engaged with at trade points to advise re crime prevention tactics.  Various tactics used- overt and covert to apprehend offenders.  Community Safety team sent pack to all Parishes advising how you can reduce vehicle crime.

### Work to reduce Retail crime

Action	Summary
High visibility patrols around Christmas	Christmas patrols took place in the retail areas of Lutterworth and

## CSP HIGHLIGHT REPORT

shopping times/occasions.	<p>Harborough to prevent retail theft and provide reassurance to the community. This was during day and evening.</p> <p>Officers worked in partnership with CCTV and local business to prevent and detect crime.</p>
Use of body cams in stores – promote across the District and through HART.	<p>Available to help with detections of/ or prevention of crime. An increase in usage would benefit stores to deter and detect.</p> <p>Our proactive officers targeted wanted or known persons who commit shop theft.</p>

### Raise awareness of Rural Acquisitive Crime and prevention

Action	Summary
Rural crime engagement	<ul style="list-style-type: none"> <li>• The start of October saw a week of action on rural crime led by PC Steve Winn, visiting 300 farms .</li> <li>• Part of these activities saw Harborough Police working with partner agencies DVSA and HDC checking vehicles on the A6, which included seeking to identify stolen vehicles, including those of an unusual type such as agricultural machinery, which have different registration requirements to conventional motor vehicles.</li> <li>• Overall 27 vehicles stopped, 2 vehicles recovered, 5 police tickets issued, DVSA prohibitions issued and plenty of good intelligence obtained.</li> <li>• Identified the top 5 locations for heritage crime in HD. Community Safety Officer attended police rural crime meetings (monthly)</li>   <li>• The start of February saw a week of action on rural crime led by HDC support by other partners and the Police. PC Steve Winn was a guest speaker in</li> <li>• Op Arable is a police led operation that provides reassurance to the farming community and engagement. We are working with a team of specials. There have been three operations targeting rural areas and farms which has proven fruitful for engagement. HDC have attended meetings and working with us to improve our relationship with the rural community and NFU. The Op Arable Rural working group meets monthly.</li> <li>• Op Vestry written which relates to Church lead thefts. We attended a Heritage crime event to assist with our crime prevention in rural areas and heritage sites.</li> <li>• Activities saw Harborough Police working with partner agencies DVSA and HDC checking vehicles on the A6, which included seeking to identify stolen vehicles, including those of an unusual type such as agricultural machinery, which have different registration requirements to conventional motor vehicles.</li> </ul>

## CSP HIGHLIGHT REPORT

Promote/educate about village watch schemes – including Facebook pages, What’s App etc.	<ul style="list-style-type: none"> <li>• Sent all Parish councils a how too guide to preventing car crime</li> <li>• Sent all Parishes information on how to reduce speeding in villages</li> <li>• Re-established contact with heritage crime links facebook and twitter pages</li> <li>• Reposting activities from rural related</li> </ul>
Rural Crime event – in East of District	<ul style="list-style-type: none"> <li>• We ran the rural crime event - there were 40 members of the public at the event - We covered the crime stoppers campaign, Datatag and policing.</li> <li>• Regular attendance at the NFU meetings</li> </ul>
<b>Issues / Risks</b>	<b>Action Taken</b>
Confidence and Satisfaction in Lutterworth	Neighbourhood Active is a new community initiative which the Local Neighbourhood Police are supporting and funding from the Violent crime fund. Recruitment took place in Feb and March. We were due to Launch in April, due to Corona, this is now possibly July.
Community Engagement	We are very focussed on community engagement. We currently have information on social media platforms such as Twitter, Facebook, Monthly newsletters and Neighbourhood Link. Neighbourhood Link we are actively asking the community to sign up. This has many advantages such as targeted surveying for community consultations.