

Brief Description of Priority

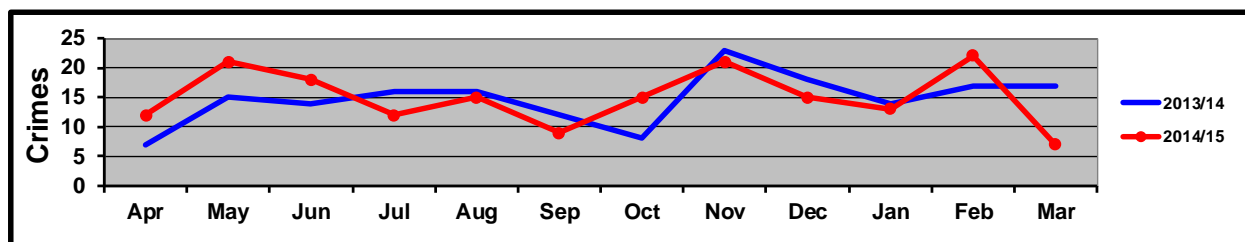
Reduce violent crime with a focus on the night time economy

- Reduce violence against the person with injury

Period Covered From/To: 1st April 2014 - 31st March 2015

Current Status: Red Amber Green

Crimes YTD	
2013/14	2014/15
177	180



Position statement

The performance year 2014 / 15 has concluded with only three more recorded violent crimes than last year. This demonstrates consistency and also provides an assurance that the approach the partnership is taking towards managing violent crime is fit for purpose.

The links between the partnership, voluntary sector, CCTV and licensed premises is strong and one that continues to be of great use.

Leicestershire Police restructured the way in which it delivers Policing across the entire county in February 2015. This has resulted in differences in the way in which the night time economy (NTE) is policed. Operation Anthem is now the force wide process by which this is managed and every weekend in the year has been assessed in terms of the potential demand it will place upon the force. Staffing levels are attributed to areas accordingly and this is a very fluid process with officers from many different areas policing the NTE in the Harborough District.

Operation Anthem is working well and feedback from volunteers on the ground at the material times, such as the Street Pastors has been positive.

I am satisfied that there are no specific issues around violent crime in the District which is a consistently safe place to be and none specifically relating to the NTE.

Focus on violence in the night time economy

Action	Summary
Fund Street Pastors to prevent alcohol related crime and asb in Market Harborough Town Centre	No. of volunteers
	No. of patrols
	No. of volunteer hours
	Street Pastors 18 Prayer Support Team 10

	<p>Bottles and glass cleared up 425 Flip flops handed out 51 Bottles of water handed out 28</p> <p>There was one incident with a group outside / inside The Cube when the Youth Work Manager attempted to close the venue early because of verbal abuse and bullying between two people which had escalated. The Street Pastors had been at the Club but had left. They were asked to come back and spent quite a bit of time listening to and calming the youngsters, mainly girls. The situation was calmed that night and the issue between the youngsters has been resolved by the Youth Work team.</p>
<p>Implement Drink Safe Stay Safe Campaign to encourage responsibility, sensible and safe drinking and risks of substance misuse, using variety of media</p>	<ul style="list-style-type: none"> • Radio ad on HFM • pubs in MH and Lutterworth Town Pubwatch schemes given Spikies and drug wipes. • Twitter messages – “Night Out or Night Mare” you tube video • Rolling display in HDC customer services. • A number of successful warrants under the misuse of drugs act have been executed by the Neighbourhood Priority Team. For example, this includes conviction of individuals dealing class A & B drugs.
<p>Work with CCTV, HART and PubWatch to actively monitor and respond to issues in the 2 Town Centres</p>	<ul style="list-style-type: none"> • CCTV control room is manned 24/7 but it is responsive (when called by police or HART) or during special events such as late night shopping, Olympic relay, arts parade etc. • HDC are currently spending in the region of 21.5% of a 24hr period actively monitoring CCTV. • A key project last year was to relocate equipment from former police station in Lutterworth to the Town Council Offices. This included installing a link to the HDC Control Centre for live monitoring rather than the images being recorded.
<p>Enforcement of licensing conditions through joint HDC/ Police visits and Test Purchase Operations</p>	<ul style="list-style-type: none"> • This is now embedded and has become business as usual. For example, Police worked with licensing around overcrowding in the Kings Head. • Police work with LFRS who have visited licensed premises to check safety and adherence to rules set out in the license. • Test purchase operation carried out in conjunction with trading standards and are intelligence led and conducted on a needs basis.