

Brief Description of Priority

To tackle and reduce ASB through;

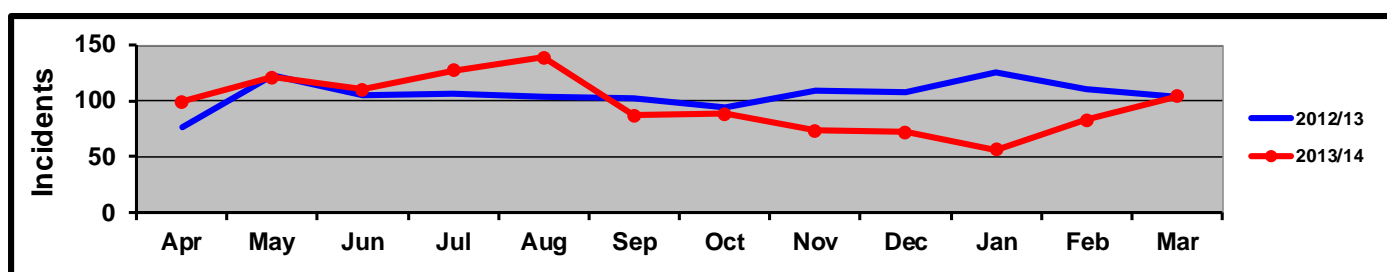
- Prevention and enforcement of ASB
- Maintaining high satisfaction levels in the way we deal with ASB
- Reduce the amount of primary and secondary fires

Period Covered From/To: April 1st 2013 – March 31st 2014

Current Status: **Red** **Amber** **Green**

Current trend data

Incidents YTD		% Change
2012/13	2013/14	
1269	1159	-8.7

**Position statement**

Harborough District Anti-Social Behaviour (ASB) figures at the end of March show a year to date decrease of 110 (8.7%) in incidents reported to the Police (1269 down to 1159).

Hotspot areas for Harborough District through the year have mainly been Harborough and Lutterworth Town centres and the Scraftoft area. A dispersal zone was put in place in Scraftoft and Thurnby for the first three months of the year to help issues with ASB in the area.

ASB from young people has reduced this year with majority of problems raised at meetings being due to neighbour disputes. This has been reflected in the low number of Acceptable Behaviour Contracts for under 18s with only 3 running during 2013/14.

There was a reduction of 15.9% in the number of criminal damage offences over the last 12 month. Criminal damage makes up 17% of Total Recorded Crime and has strong links with ASB. It also showed the partnership is performing better than its most similar districts ranked 2/15. Lutterworth Town Centre & East and Market Harborough Town Centre were the two main hotspots for criminal damage.

Throughout 2013/14 just over 100 people across the district were in treatment for drug addiction and just over 80 for alcohol. This has remained stable since 2011/12 when Swanswell were commissioned to carry out substance abuse treatment.

Police figures for satisfaction around ASB show an overall figure of 79%. The figure is 96% for first contact but 70% for follow-up and Action.

Leicestershire Fire and rescue service attended 1062 fires within 2013 / 2014 which were started deliberately. It remains the single largest cause of major fires in the UK. Arson is a serious issue and can result in injury, damage to property and even loss of life.

There were a total of 59 deliberate fires in Harborough during the last 12 months which is 5.5% of overall service in the county. This is an increase of 12 incidents from the previous year 2012 / 2013, despite all of the community initiative work and youth engagement work carried out. 28 incidents were classified as primary fires which involve property and include buildings, caravans, motor vehicles, plant and machinery, the other 31 incidents represented outdoor shrub's, wheelie bins, grassland vegetation, loose refuse etc .

Summary of activity

Warning Zone (PCC Funded)

13 Primary schools attended from the ASBs 'hot spot' areas sending around 557 pupils. Warning Zone is an interactive education centre in Leicester that encourages young people to explore issues around risk, peer pressure, anti-social behaviour and personal responsibility.

Numerous letters from children and teachers attending Warning Zone have been received thanking the CSP for the funding and highlighting how informative it has been. In particular they highlight learning about the possibility of getting a criminal record at age 10 and the dangers of trespassing on train lines amongst the most memorable activities.

Diversiory Activities

Half-term projects in October and February utilised the Chill-out bus plus Youth Workers at 7 locations around the district during half-term weeks, 133 individuals were engaged. Highlights from report the report from the youth leader include:

- The Speakout competition was promoted and a number of young people took the information home from the Chillout Bus.
- Discussion topics included bullying (this was discussed in almost all sessions); local facilities such as sports facilities and parks; schools and changing schools; siblings; Harborough Against Bullying; names, ethnicity and nationality.
- A number of young people said that they wanted to do a session like this again and asked if the bus could stay longer.
- Some young people who had been smoking stopped in order to come onto the bus.
- Some young people said they had come to the previous sessions in the autumn and remembered the activities that they had taken part in.
- Contact details for 33 young people / parents were collected who requested that they be contacted again when the bus is in the area.
- Those people who were contacted from the autumn sessions, either came to the Spring

sessions or texted to say they were on holiday and unable to come.

Redeployable Camera

The camera was deployed in a location in Market Harborough following number of reports to housing association, police and HDC regarding ASB from residents and their visitors which was spilling over into the street. Once deployed complaints reduced dramatically.

It was deployed in Kibworth to provide reassurance to residents following a community meeting. Residents were concerned about ASB, harassment and crime during the eviction process of a resident.

It was deployed in Market Harborough to help deter damage to vehicles in the area which had been occurring on a frequent basis— there have been no reports of damage since camera installed.

Campaigns

All campaigns include publicity through social media (Twitter, Facebook), press releases, use of local shop fronts and radio coverage either as adverts or interviews.

Lighter Nights- local and Countywide campaign around perception of children playing and ball games, motorbikes/mini motos using Respect and Tolerance publicity. It also included Noise Action week.

Safer Summer- incorporating Drink Safe Stay Safe, Countywide campaign and police drink drive campaign.

Halloween, Bonfire Night – Countywide ASB campaign including work with schools, local input with chill-out bus and publicity etc.

Christmas Presence - joint local campaign with all agencies in HDCSP to include Drink Safe Stay Safe, Fatal 4, burglary advice, Respect and Tolerance.

Joint Action Group (JAG)

This is a multi-agency meeting once a month to look at ASB and crime that requires a multiagency approach and in particular to discuss any high risk vulnerable persons involved. Members of the JAG are the Police, HDC Community Safety, Licensing and Environmental Health, Fire service, Adult Social Care and LCC Early Help (Youth Service and Youth Offending). Housing Associations can also attend. However following the JAG there are monthly Housing Liaison meeting to discuss all ASB issues with the Housing Associations in the District. An example of success using a multi-agency approach was the successful eviction of a tenant by a housing association, who had been involved in ASB and crime. Regular meetings took place with the housing association and police, a residents meeting took place, the re-deployable camera was used and referrals to victim support was undertaken as appropriate.

Incremental approach to Tackling ASB

ASB from has reduced this year with majority of problems raised at meetings being due to neighbour disputes. This has been reflected in the low number of Acceptable Behaviour Contracts for under 18s with only 3 running during 2013/14.

There have been 3 new Criminal Anti-Social Behaviour Orders (CRASBOs) in place following incidents in the Fleckney area.

Sentinel

This is the joint reporting system for ASB with the police and HDC. HDC now has an interface from LAGAN, the Customer Service recording system, to Sentinel and all environmental ASB (e.g. noise/fly tipping etc.) is now transferred to Sentinel. This s is still case managed through Uniform or LAGAN . There have been 105 cases during the year from HDC Community Safety and since the interface there have been 79 cases of Environmental ASB recorded (66 fly tipping in two months). Police incidents on Sentinel (managed cases) for the year were 373.

Substance misuse

Swanswell have made good progress in its work carried out in the Market Harborough and Lutterworth district during the past 12months. Swanswell has carried on developing its work from the Market Harborough surgery, which is working very well for its registered patients.

Swanswell have been able to secure a community based drop in session and health clinic from Moins chemist. This development supports the public's direct access to drug and alcohol treatment within the area on Wednesday and Friday mornings. The relationship built up with Moins chemist during the year is proving to be very successful and is providing much better access to Swanswell's service delivery. Swanswell has carried providing its Peer mentor group work programme and its family and careers support groups from the One-Stop Shop location in Lutterworth. Attendance of these groups have been quite low over the past months and feedback from service users that is due to the distance that they are having to travel from Market Harborough to Lutterworth and the cost.

Swanswell has been trying to explore options for the groups to run from Market Harborough, with the local fire station, police station and the new HDC building. HDC and the County Council are in discussion with regards to access to The Symingtons Building. This move will support not only group work in the area but recovery from the use of drugs and alcohol.